

ILLUSTRATIONS
OF THE
TEXTILE MANUFACTURES
OF INDIA.

SCIENCE AND ART DEPARTMENT
OF THE COMMITTEE OF COUNCIL ON EDUCATION,
SOUTH KENSINGTON MUSEUM.

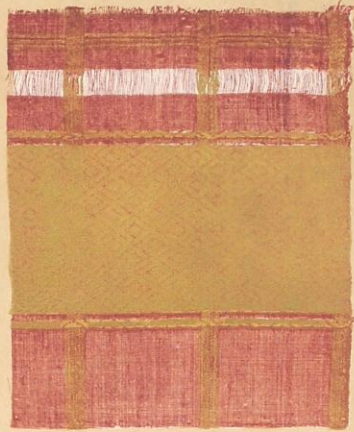
ILLUSTRATIONS
OF
THE TEXTILE MANUFACTURES
OF INDIA.



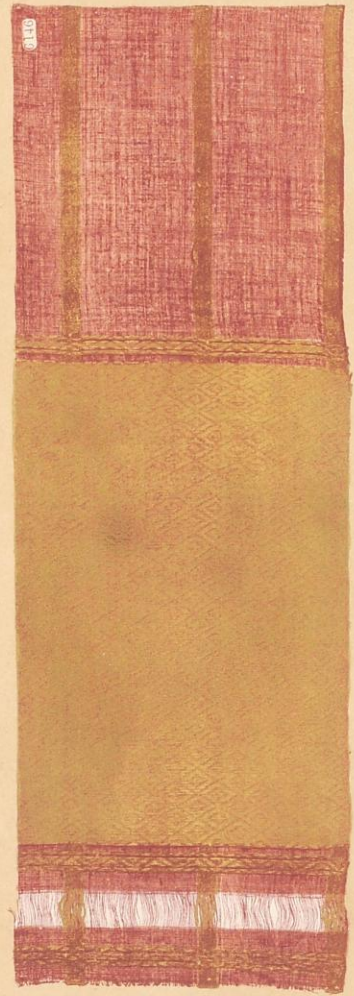
LONDON: 1881.



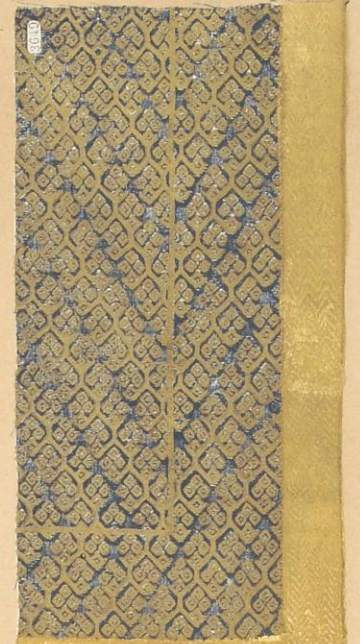
2.



3A.



3.



4.

W. GRIGGS, PHOTO-LITHO.

INDIA MUSEUM

TURBANS.

2. PRINCIPAL END OF PIECE.

Length, 2 Yds. 31 Ins.; Width, 15 Ins.; Weight, 14 oz. 3 dr.

BENARES.

3. PRINCIPAL END OF PIECE. - - - 3A. OPPOSITE END OF PIECE.

Length, 13 Yds. 30 Ins.; Width, 13 Ins.; Weight, 8 oz. 12 dr.

HYDERABAD, SIND.

4. PRINCIPAL END OF PIECE.

Length, 2 Yds. 28½ Ins.; Width, 15 Ins.; Weight, 13 oz. 13 dr.

BENARES.



W. GRIGGS, PHOTO-LITHO.

INDIA MUSEUM

TURBANS.

PRINCIPAL END OF PIECE.

Length,	1 Yd. 12½ Ins.
Width,	1 Yd. 12 Ins.
Weight,	2 oz. 5 dr.

BHURTPORE.

NO. 5, SECOND SERIES.

PRINCIPAL END OF PIECE.

Length,	1 Yd. 24½ Ins.
Width,	1 Yd. 22 Ins.
Weight,	9 oz. 2 dr.
Price,	£3 10s.

BENARES.

NO. 6, SECOND SERIES.



W. GRIGGS, PHOTO-LITHO.

INDIA MUSEUM

TURBANS.

7. PRINCIPAL END OF PIECE. - 7A. OPPOSITE END OF PIECE. FROM CHANDARI.
Length, 29 Yds. 10 Ins.; Width, 11½ Ins.; Weight, 7 oz. 14 dr. Price, £1 1s. 2d.
8. PRINCIPAL END OF PIECE. - 8A. OPPOSITE END OF PIECE. FROM CHANDARI.
Length, 29 Yds. 22 Ins.; Width, 11½ Ins.; Weight, 8 oz. Price, £1 1s. 2d.
9. PRINCIPAL END OF PIECE. - 9A. OPPOSITE END OF PIECE. FROM CHANDARI.
Length, 30 Yds. 3¼ Ins.; Width, 10 Ins.; Weight, 7 oz. 1 dr. Price, £1 3s. 9d.
10. PRINCIPAL END OF PIECE. - 10A. OPPOSITE END OF PIECE. FROM CHANDARI.
Length, 28 Yds. 32 Ins.; Width, 8½ Ins.; Weight, 5 oz. 8 dr. Price, 16s. 9d.
11. PRINCIPAL END OF PIECE. - 11A. OPPOSITE END OF PIECE. FROM CHANDARI.
Length, 30 Yds. 32½ Ins.; Width, 10½ Ins.; Weight, 7 oz. Price, £1 3s. 3d.
12. PRINCIPAL END OF PIECE. - 12A. OPPOSITE END OF PIECE. FROM CHANDARI.
Length, 42 Yds. 24 Ins.; Width, 12¼ Ins.; Weight, 12 oz. 3 dr. Price, £1 10s. 6d.
13. PRINCIPAL END OF PIECE. - 13A. OPPOSITE END OF PIECE. FROM OMRAIR, CENTRAL INDIA
Length, 6 Yds. 10½ Ins.; Width, 12¼ Ins.; Weight, 2 oz. 11 dr. Price, 19s. 3d.
14. PRINCIPAL END OF PIECE. - 14A. OPPOSITE END OF PIECE. FROM CHANDARI.
Length, 29 Yds. 30½ Ins.; Width, 12 Ins.; Weight, 8 oz. 4 dr. Price, £1 1s. 5d.



W. BRIGGS, PHOTO-LITHO.

TURBANS.

INDIA MUSEUM.

SECOND SERIES

15. PRINCIPAL END OF PIECE. - 15A. OPPOSITE END OF PIECE. FROM CHUNDEREE.
Length, 28 Yds. $13\frac{1}{2}$ Ins.; Width, 8 Ins.; Weight, 4 oz. 2 dr. Price, 15s.
16. PRINCIPAL END OF PIECE. - 16A. OPPOSITE END OF PIECE. FROM HYDERABAD, DECCAN.
Length, 22 Yds. $31\frac{1}{2}$ Ins.; Width, $11\frac{1}{2}$ Ins.; Weight, 6 oz. 12 dr. Price, 16s.
17. PRINCIPAL END OF PIECE. - 17A. OPPOSITE END OF PIECE. FROM CHUNDEREE.
Length, 39 Yds. 19 Ins.; Width, 12 $\frac{1}{2}$ Ins.; Weight, 9 oz. 9 dr. Price, £1 9s. 8d.
18. PRINCIPAL END OF PIECE. - 18A. OPPOSITE END OF PIECE. FROM DELHI.
Length, 22 Yds. 31 Ins.; Width, 11 Ins.; Weight, 5 oz. 4 dr. Price, 18s. 6d.
19. PRINCIPAL END OF PIECE. - 19A. OPPOSITE END OF PIECE. FROM NANDAIR, HYDERABAD.
Length, 27 Yds. 20 Ins.; Width, $11\frac{1}{2}$ Ins.; Weight, 12 oz. 14 dr. Price, £6 2s.
20. PRINCIPAL END OF PIECE. - 20A. OPPOSITE END OF PIECE. FROM CHUNDEREE.
Length, 28 Yds. 21 $\frac{1}{2}$ Ins.; Width, 8 $\frac{1}{2}$ Ins.; Weight, 4 oz. 11 dr. Price, 15s.
21. PRINCIPAL END OF PIECE. - 21A. OPPOSITE END OF PIECE. FROM BHURTPORE.
Length, 22 Yds. 28 $\frac{1}{2}$ Ins.; Width, $11\frac{1}{2}$ Ins.; Weight, 12 oz. 4 dr.
22. PRINCIPAL END OF PIECE. - 22A. OPPOSITE END OF PIECE. FROM DELHI.
Length, 17 Yds. 32 Ins.; Width, 8 Ins.; Weight, 2 oz. 14 dr. Price, 12s.
23. PRINCIPAL END OF PIECE. - 23A. OPPOSITE END OF PIECE. FROM NANDAIR, HYDERABAD.
Length, 23 Yds. $13\frac{1}{2}$ Ins.; Width, 10 Ins.; Weight, 5 oz. 13 dr. Price, £1 10s.



TURBANS.

- | | | | | |
|-----------------------------|-----------------|----------------------|---|-----------------------------|
| 24. PRINCIPAL END OF PIECE. | - | - | - | 24A. OPPOSITE END OF PIECE. |
| Length, 16 Yds. 35 Ins.; | Width, 8 Ins.; | Weight, 2 oz. 13 dr. | | |
| 25. PRINCIPAL END OF PIECE. | - | - | - | 25A. OPPOSITE END OF PIECE. |
| Length, 13 Yds. 32 Ins.; | Width, 9 Ins.; | Weight, 3 oz. 7 dr. | | |
| 26. PRINCIPAL END OF PIECE. | - | - | - | 26A. OPPOSITE END OF PIECE. |
| Length, 16 Yds. 21 Ins.; | Width, 8½ Ins.; | Weight, 2 oz. 11 dr. | | |

JEYPORE.

- | | | | | |
|-----------------------------|-----------------|----------------------|---|-----------------------------|
| 27. PRINCIPAL END OF PIECE. | - | - | - | 27A. OPPOSITE END OF PIECE. |
| Length, 17 Yds. 1 In.; | Width, 9½ Ins.; | Weight, 3 oz. 13 dr. | | |

DELHI.



TURBANS.

28. PRINCIPAL END OF PIECE. - - - 28A. OPPOSITE END OF PIECE.
 Length, 17 Yds. 30½ Ins.; Width, 7¼ Ins.; Weight, 2 oz. 11 dr.:

29 TO 35. PATTERNS OF CENTRES OF TURBAN PIECES WITH ENDS, SIMILAR TO Nos. 28 & 36.

36. PRINCIPAL END OF PIECE. - - - 36A. OPPOSITE END OF PIECE.
 Length, 14 Yds. 20½ Ins.; Width, 7½ Ins.; Weight, 2 oz. 5 dr.

JEYPORE.



W. BRIDGE, PHOTO-LITHO.

INDIA MUSEUM.

TURBANS.

PRINCIPAL END OF PIECE.

Length, 14 Yds. 25½ Ins.
 Width, 7¾ Ins.
 Weight, 3 oz. 2 dr.

JEYPORE.

NO. 40, SECOND SERIES.

PRINCIPAL END OF PIECE.

Length, 3 Yds. 10½ Ins.
 Width, 3 Yds. 11½ Ins.
 Weight, 1 lb. 11 oz. 6 dr.
 Price, £6 10s.

COIMBATORE.

NO. 41, SECOND SERIES.



48.

PHOTO-LITH. BY W. GRIGGS

INDIA MUSEUM

LOOM EMBROIDERED TURBAN-PIECE.

HYDERABAD - DECCAN

Length, 2 Yds. 26 Ins.; Width, 2 Yds. 22 Ins.; Weight, 1 lb.

NO. 48, SECOND SERIES.



W. GRIGGS, PHOTO-LITHO

INDIA MUSEUM

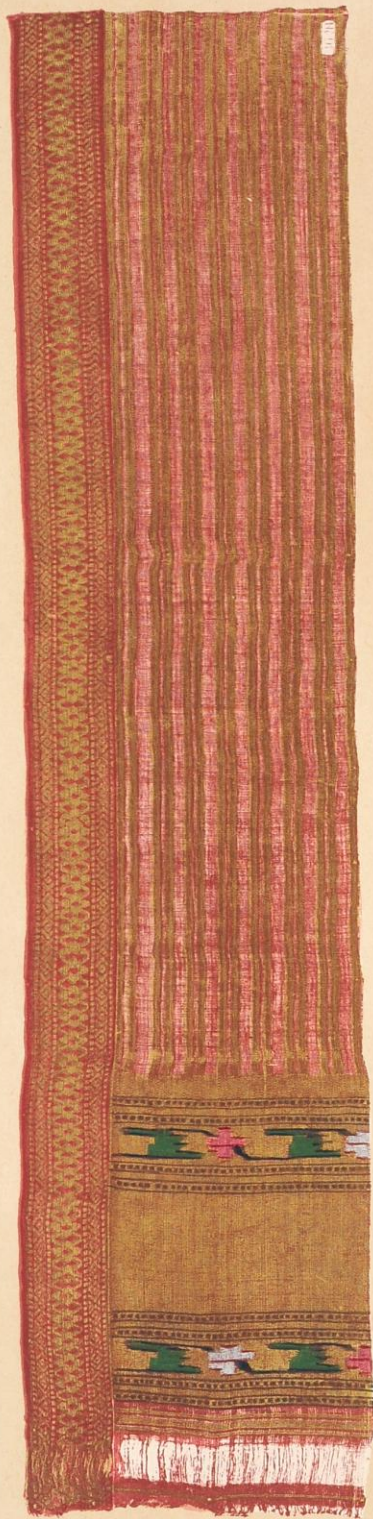
TURBAN.

PRINCIPAL END OF PIECE.

Length, 2 Yds. 22 Ins.; Width, 16 $\frac{1}{2}$ Ins.; Weight, 7 oz. 5 dr.

BURANPOOR, DECCAN.

NO. 52, SECOND SERIES.



56.



57A.



57.



58.

W. GRIGGS, PHOTO-LITHO.

INDIA MUSEUM

TURBANS.

PRINCIPAL END OF PIECE.
 Length, 2 Yds. 20½ Ins.
 Width, 13 Ins.
 Weight, 4 oz. 5 dr.

BOORHANPORE.

NO. 56, SECOND SERIES.

No. 57. PRINCIPAL END OF PIECE.
 No. 57A. OPPOSITE END OF PIECE.
 Length, 14 Yds. 18 Ins.
 Width, 9¼ Ins.
 Weight, 10 oz. 3 dr.
 Price, £4

ROHTUCK, PUNJAB.

NO. 57, SECOND SERIES.

PRINCIPAL END OF PIECE.
 Length, 2 Yds. 21 Ins.
 Width, 13 Ins.
 Weight, 4 oz. 7 dr.

BOORHANPORE.

NO. 58, SECOND SERIES.



59.

W. GRIGGS, PHOTO-LITHO.

INDIA MUSEUM.

TURBAN.

PRINCIPAL END OF PIECE.

Length, 40 Yds. 25 Ins.; Width, 19½ Ins.; Weight, 3 lb. 5 oz. 1 dr. Price, £30.

NOWANUGGUR, KATTYWAR.

NO. 59, SECOND SERIES.



60.

W. BRIGGS, PHOTO-LITHO.

INDIA MUSEUM

TURBAN.

PRINCIPAL END OF PIECE.

Length, 1 Yd. 28½ Ins.; Width, 1 Yd. 20 Ins.; Weight, 14 oz. 7 dr. Price, £10.

MORVEE, KATTYWAR.

NO. 60, SECOND SERIES.



61.

W. GRIGGS, PHOTO-LITHO.

INDIA MUSEUM

TURBAN.

PRINCIPAL END OF PIECE.

Length, 1 Yd. 19 Ins.; Width, 1 Yd. 23 Ins.; Weight, 12 oz. 13 dr.

AHMEDABAD.

NO. 61, SECOND SERIES.



W. BRIGGS, PHOTO-LITHO.

INDIA MUSEUM

TURBANS.

No. 62, PRINCIPAL END OF PIECE.
 No. 62A, OPPOSITE END OF PIECE.
 Length, 31 Yds. 11 Ins.
 Width, 18½ Ins.
 Weight, 1 lb. 2 oz. 15 dr
 Price, £1.

AHMEDABAD.
 NO. 62, SECOND SERIES.

No. 63, PRINCIPAL END OF PIECE.
 No. 63A, OPPOSITE END OF PIECE.
 Length, 25 Yds. 4 Ins.
 Width, 16 Ins.
 Weight, 11 oz.
 Price, £1.

AHMEDABAD, BOMBAY.
 NO. 63, SECOND SERIES.

No. 64, PRINCIPAL END OF PIECE
 No. 64A, OPPOSITE END OF PIECE.
 Length, 54 Yds. 32 Ins.
 Width, 20 Ins.
 Weight, 2 lb. 3 oz.
 Price, £4 16s.

AHMEDNUGGUR.
 NO. 64, SECOND SERIES.



W. GRIGGS, PHOTO-LITH

INDIA MUSEUM

MAN'S GARMENT.

Length, 3 Yds. 8½ Ins.; Width, 30 Ins.; Weight, 7 oz. 1 dr.

RAJAHAMUNDRY.

NO. 65, SECOND SERIES.

" 2892 "



W. GRIGGS, PHOTO-LITH.

INDIA MUSEUM.

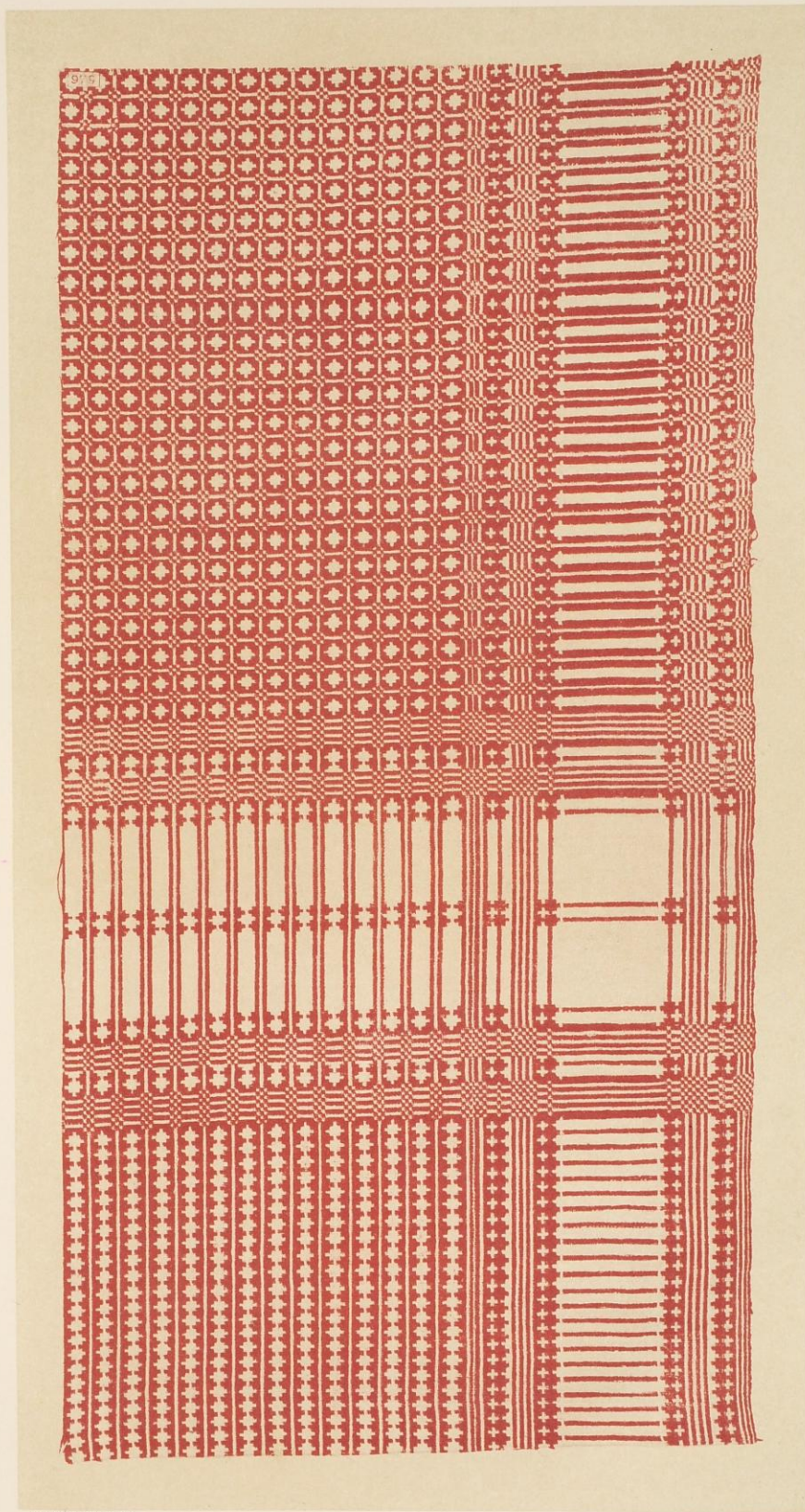
MAN'S GARMENT.

Length, 3 Yds. 13½ Ins.; Width, 1 Yd. 25 Ins.; Weight, 1 lb. 1 oz. 14 dr.

AURUNGABAD, DECCAN.

NO. 66, SECOND SERIES.

"5508"



W. BRIGGS, PHOTO-LITH

INDIA MUSEUM

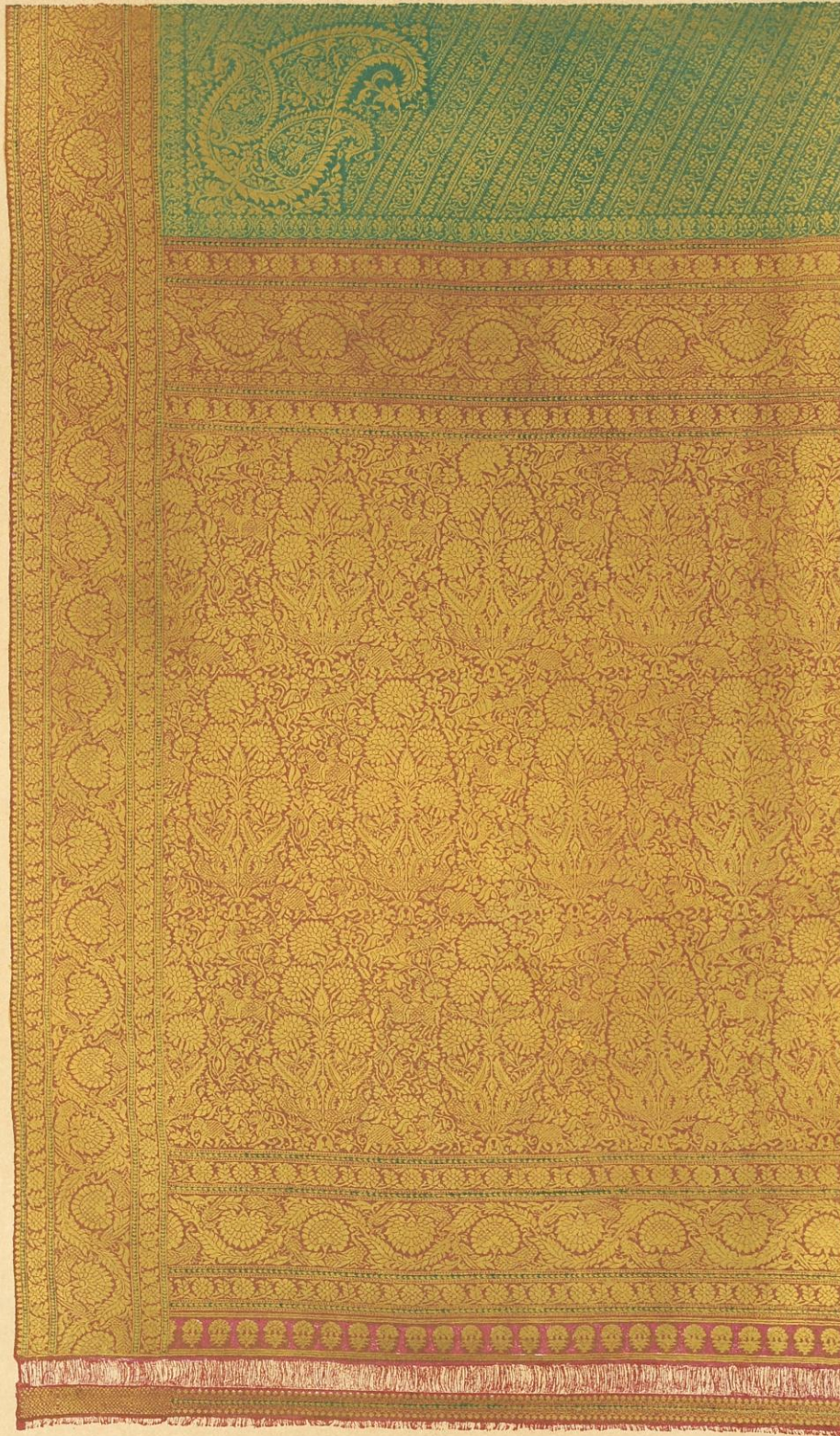
MAN'S GARMENT.

Length, 2 Yds. $32\frac{1}{2}$ Ins.; Width, 29 Ins.; Weight, 15 oz. 3 dr.

HYDERABAD, DECCAN.

NO. 67, SECOND SERIES.

"979"



W. GRIGGS, PHOTO-LITH

INDIA MUSEUM

MAN'S GARMENT.

Length, 3 Yds. 27 Ins.; Width, 1 Yd. 17 Ins.; Weight, 4 lb. 1 oz. 4 dr.

BOORHANPORE.

NO. 67A. SECOND SERIES.

"3641"



W. GRIGGS, PHOTO-LITH

INDIA MUSEUM

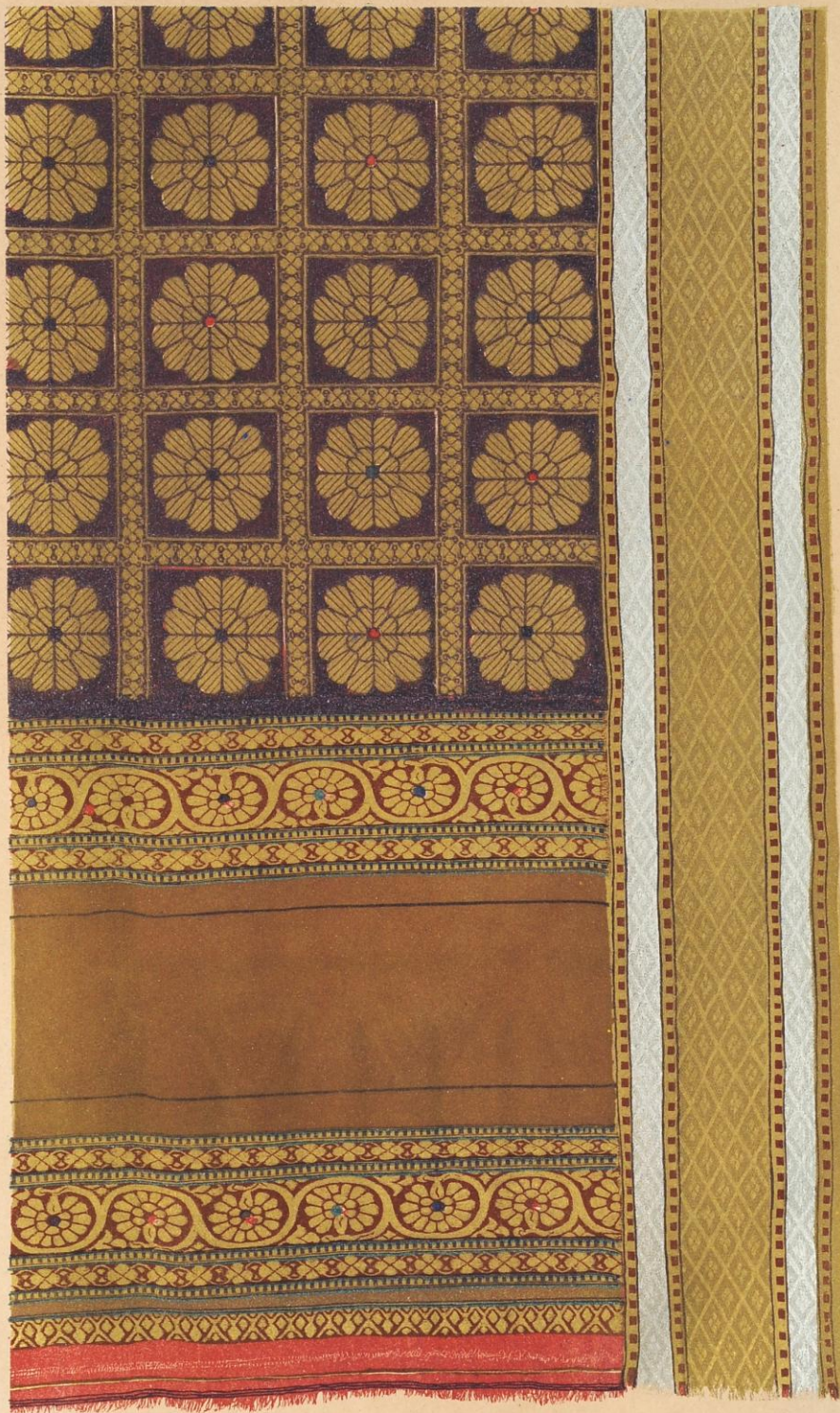
MAN'S GARMENT.

Length, 3 Yds. 25½ Ins.; Width, 1 Yd. 26½ Ins.; Weight, 2 lb. 14 oz. 5 dr.

BOORHANPORE.

NO. 67B, SECOND SERIES.

"8243"



MAN'S GARMENT.

Length, 2 Yds. 29 Ins.; Width, 1 Yd. 11 Ins.; Weight, 2 lb. 5 dr.

NUGGUR, KATTYWAR.

NO. 68, SECOND SERIES.

"7528"



W. GRIGGS, PHOTO-LITH.

INDIA MUSEUM.

MAN'S GARMENT.

Length, 3 Yds. 31 Ins.; Width, 26 Ins.; Weight, 1 lb. 11 oz. 7 dr.

TATTA, SIND.

NO. 71, SECOND SERIES.

"5705"



W. GRIGG, PHOTO-LITH.

INDIA MUSEUM.

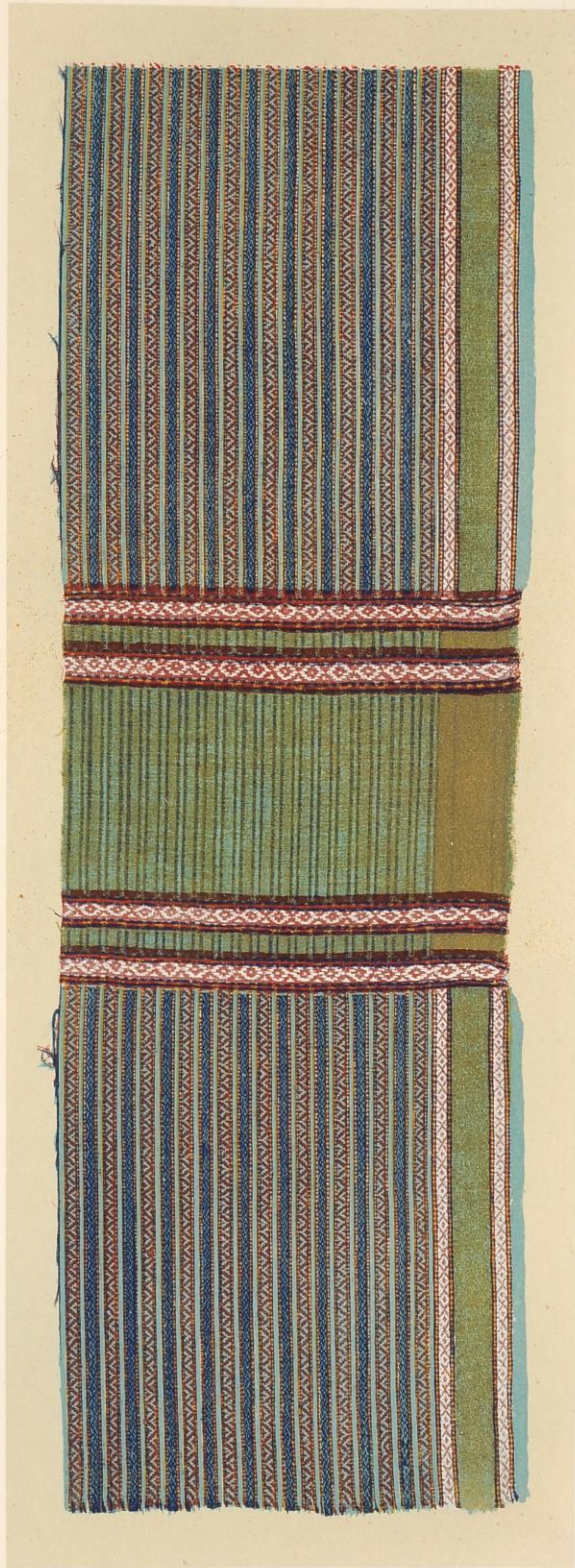
MAN'S GARMENT.

Length, 2 Yds. 28 Ins.; Width, 24½ Ins.; Weight, 10 oz. 5 dr.

RANEEPORE, SIND.

NO. 73, SECOND SERIES.

"2592"



MAN'S GARMENT.

Length, 4 Yds.; Width, 29 Ins.; Weight, 1 lb. 2 oz. 5 dr.

SIND.

NO. 74, SECOND SERIES.

"2960"



MAN'S GARMENT.

Length, 4 Yds. $4\frac{1}{2}$ Ins.; Width, $28\frac{1}{2}$ Ins.; Weight, 1 lb. 2 oz. 5 dr.

SIND,

NO. 75, SECOND SERIES.

"2975"



MAN'S GARMENT.

Length, 4 Yds. 2 Ins. ; Width, 27 Ins. ; Weight, 12 oz. 11 dr.

HYDERABAD, SIND.

NO. 77, SECOND SERIES.

"2974"



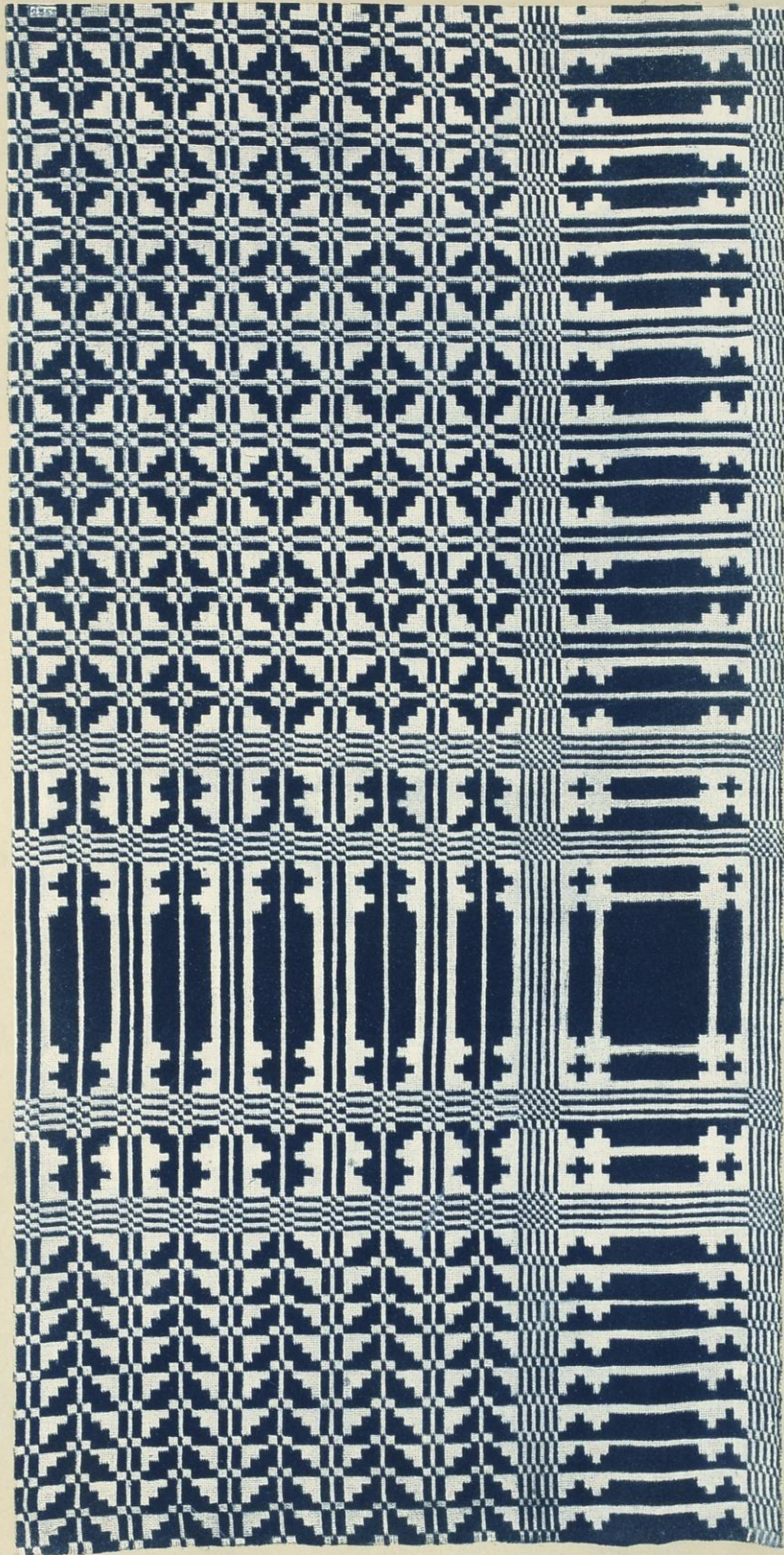
MAN'S GARMENT.

Length, 4 Yds.; Width, 28 Ins.; Weight, 1 lb. 2 oz. 4 dr.

HYDERABAD, SIND.

NO. 78, SECOND SERIES.

"2958"



W. GRIGGS, PHOTO-LITH

INDIA MUSEUM

MAN'S GARMENT.

Length, 2 Yds. $34\frac{1}{2}$ Ins.; Width, 29 Ins.; Weight, 15 oz. 1 dr.

NUSRAPORE, SIND.

NO. 79, SECOND SERIES.

"2852"



MAN'S GARMENT.

Length, 3 Yds. 32 Ins.; Width, 28 Ins.; Weight, 15 oz. 4 dr.

SIND.

NO. 80, SECOND SERIES.

"2977"



W. CRICKE, PHOTO-LITH.

INDIA MUSEUM.

MAN'S GARMENT.

Length, 5 Yds. 33 Ins.; Width, 1 Yd. 18 Ins.; Weight, 1 lb. 12 oz. 12 dr.

NAGPORE.

NO. 84, SECOND SERIES.

"2984"

5675



W. GRIGGS, PHOTO-LITH.

INDIA MUSEUM.

MAN'S GARMENT.

Length, 4 Yds. 14½ Ins.; Width, 1 Yd. 32 Ins.; Weight, 1 lb.

CHUNDEREE, CENTRAL INDIA.

NO. 86, SECOND SERIES.

"5675"



W. GRIGGS, PHOTO-LITH

INDIA MUSEUM

MAN'S GARMENT.

Length, 3 Yds. 33 Ins.; Width, 1 Yd. 27½ Ins.; Weight, 9 oz. 8 dr.

CHUNDAREE.

NO. 87, SECOND SERIES.

"5671"

5594



W. GRIGGS, PHOTO-LITH.

INDIA MUSEUM

MAN'S GARMENT.

Length, 4 Yds. $14\frac{1}{2}$ Ins.; Width, 1 Yd. $3\frac{1}{2}$ Ins.; Weight, 1 lb. 6 dr.

CHUNDAREE.

NO. 88, SECOND SERIES.

"5594"



W. GRIGGS, PHOTO-LITH

INDIA MUSEUM

MAN'S GARMENT.

Length, 4 Yds. $17\frac{1}{2}$ Ins.; Width, 1 Yd. 29 Ins.; Weight, 14 oz. 6 dr.

CHUNDAREE.

NO. 89, SECOND SERIES.

"5676"

5673



W. BRIGGS, PHOTO-LITH.

INDIA MUSEUM

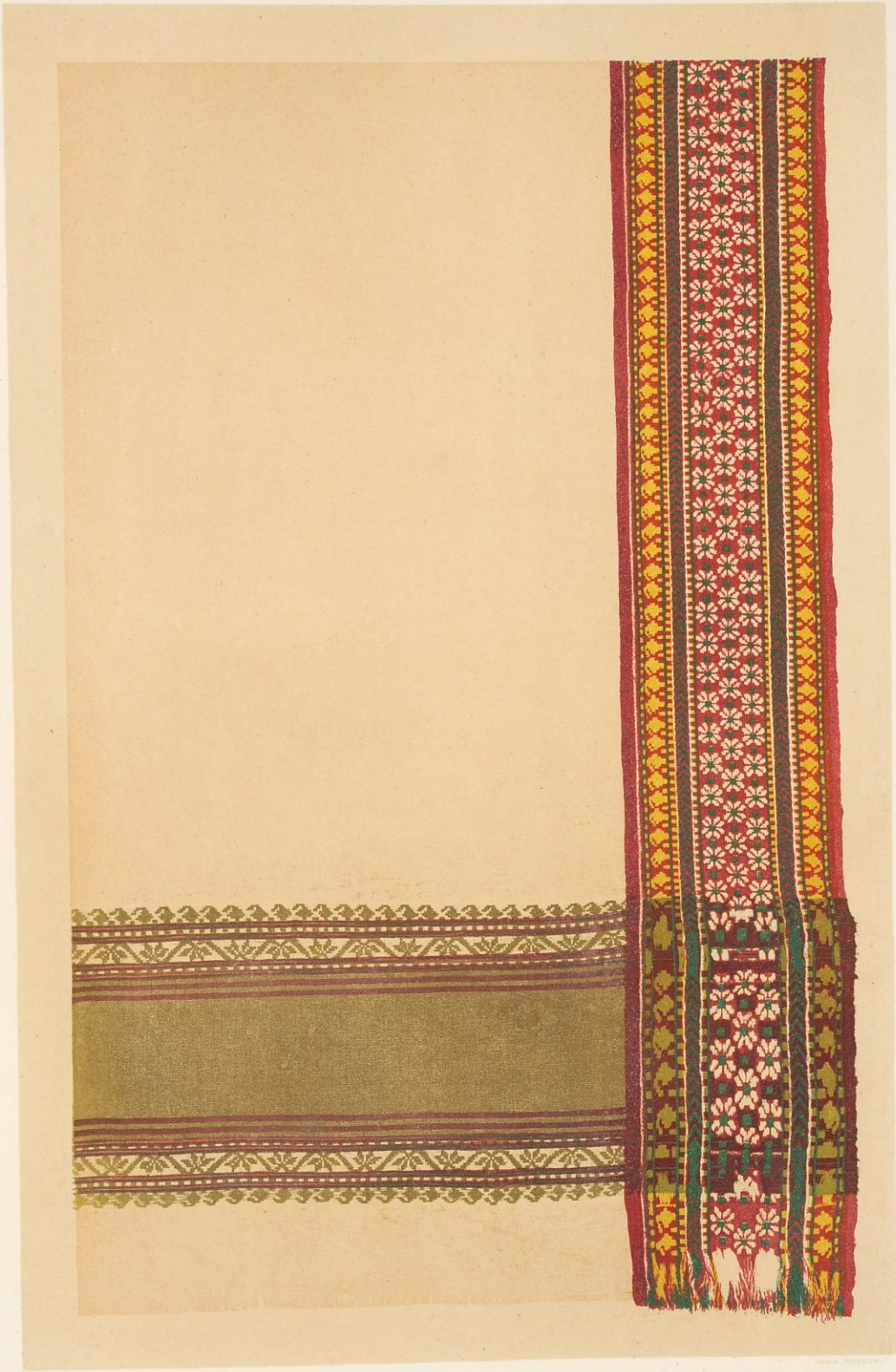
MAN'S GARMENT.

Length, 4 Yds. 20 Ins.; Width, 1 Yd. 27 Ins.; Weight, 1 lb. 9 oz. 3 dr.

CHUNDAREE.

NO. 90, SECOND SERIES.

"5673"



MAN'S GARMENT.

Length, 4 Yds. 6 Ins.; Width, 1 Yd. 32 Ins.; Weight, 12 oz. 14 dr.

CHUNDAREE.

NO. 91, SECOND SERIES.

"5677"



MAN'S GARMENT.

Length, 4 Yds. 22 Ins.; Width, 1 Yd. 26½ Ins.; Weight, 1 lb. 6 oz. 14 dr.

CHUNDAREE.

NO. 92, SECOND SERIES.

"2905"



MAN'S GARMENT.

Length, 5 Yds. 16 Ins.; Width, 1 Yd. 8 Ins; Weight, 1 lb. 13 oz. 2 dr.

BENARES.

NO. 93, SECOND SERIES.

"2986"



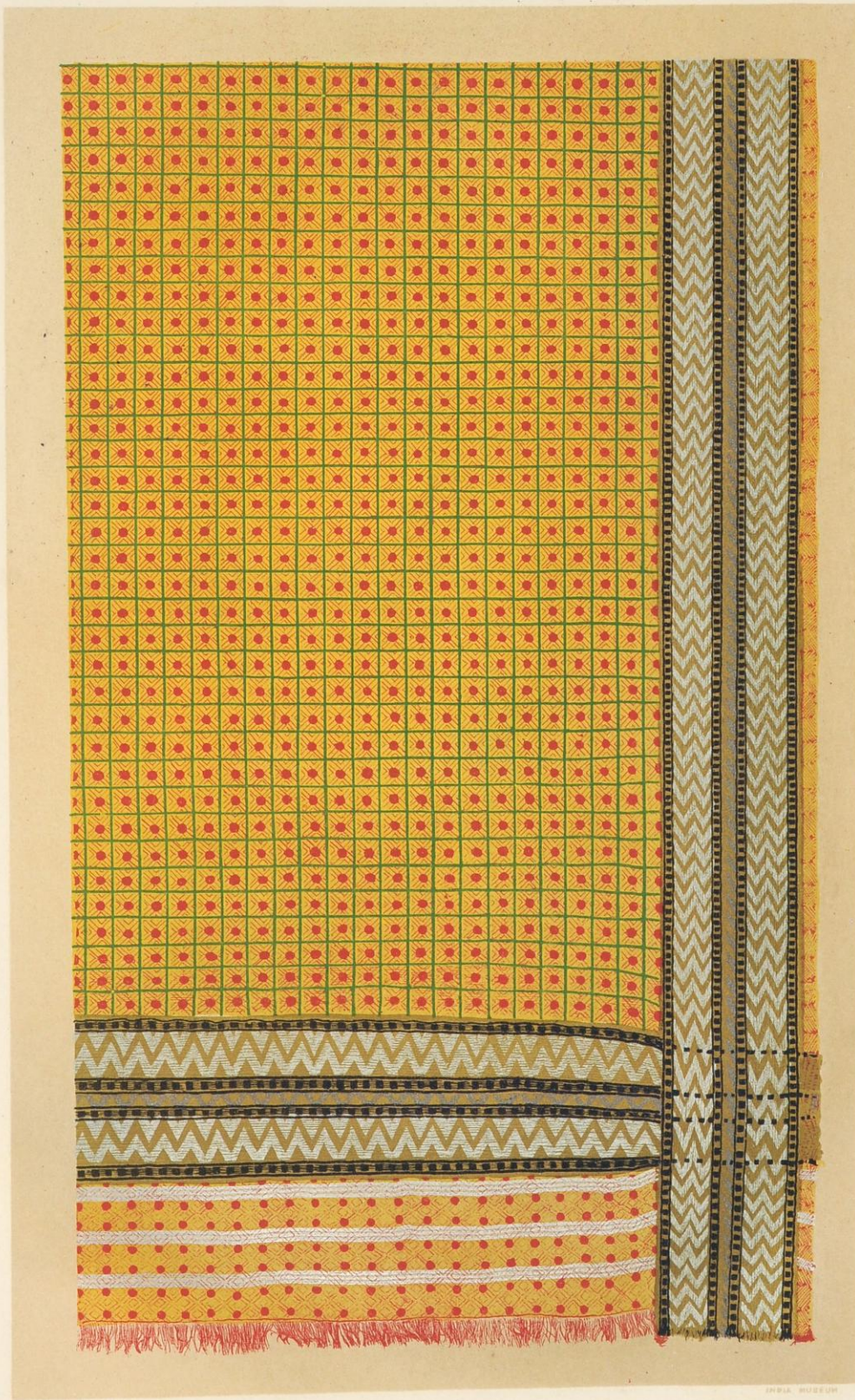
MAN'S GARMENT.

Length, 3 Yds. $15\frac{1}{2}$ Ins.; Width, 1 Yd. $24\frac{1}{2}$ Ins.; Weight, 3 lb. 4 oz. 14 dr.

BENARES.

NO. 94, SECOND SERIES.

"8271"



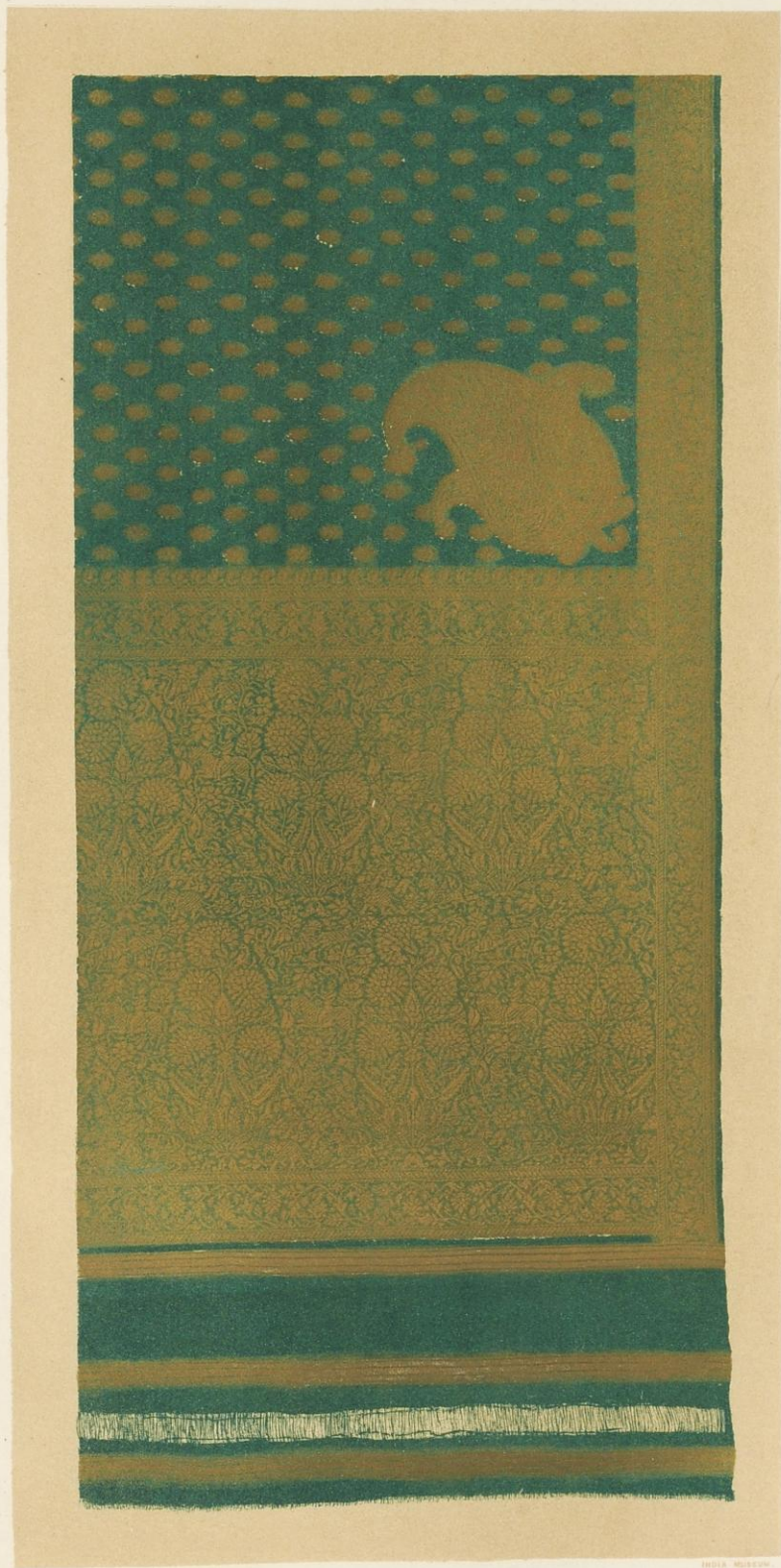
MAN'S GARMENT.

Length, 3 Yds. 14½ Ins.; Width, 1 Yd. 20 Ins.; Weight, 1 lb. 11 oz. 3 dr.

BENARES.

NO. 96, SECOND SERIES.

"2969"



INDIA MUSEUM PHOTO LITH.

INDIA MUSEUM

MAN'S GARMENT.

Length, 5 Yds. 6½ Ins.; Width, 1 Yd. 4½ Ins.; Weight, 1 lb. 9 oz.

BENARES.

NO. 97, SECOND SERIES.

"7529"



W. BRIDGE, PHOTO-ENGR.

INDIA, MUSEUM.

MAN'S GARMENT.

Length, 5 Yds. 7½ Ins.; Width, 1 Yd. 5½ Ins.; Weight, 2 lb. 5 oz. 6 dr.

BENARES.

NO. 98, SECOND SERIES.

"7827"



W. BRIDGE, PHOTO-LITH.

INDIA MUSEUM

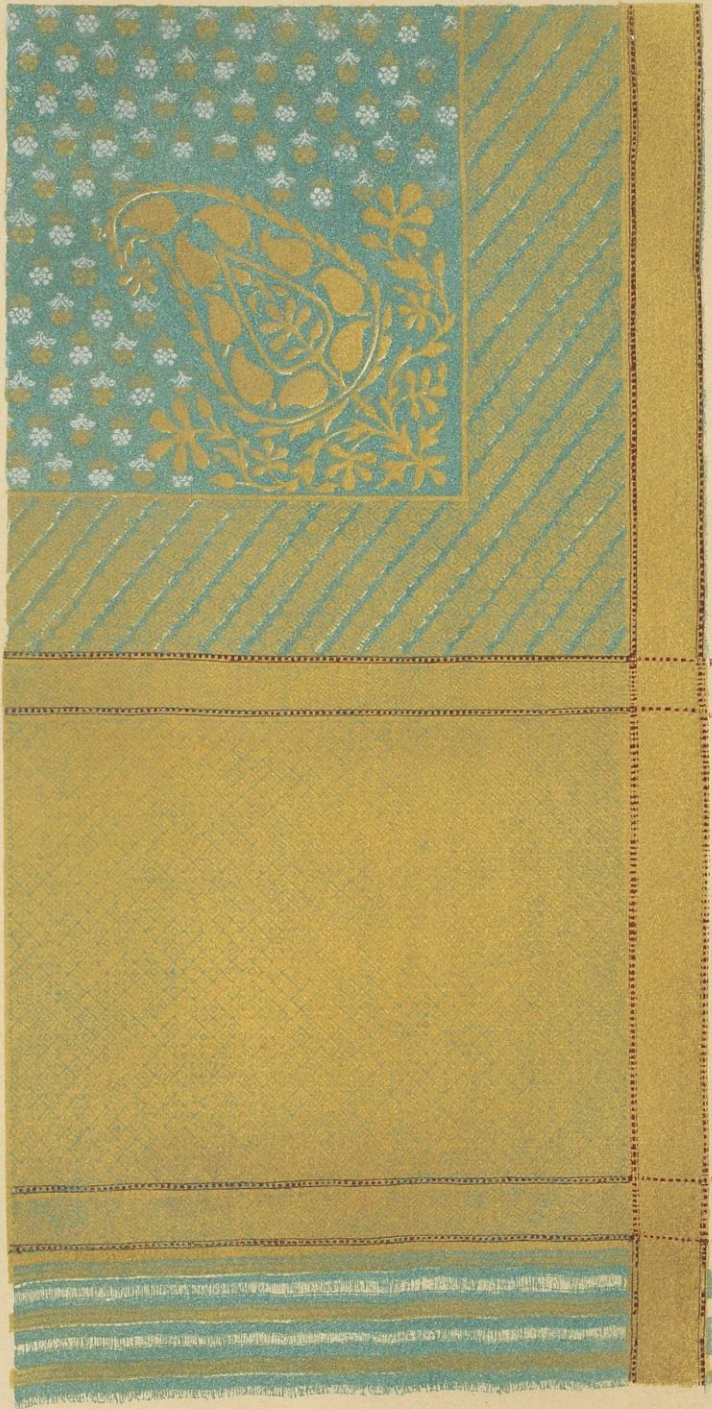
MAN'S GARMENT.

Length, 3 Yds. 17 Ins.; Width, 1 Yd. 23½ Ins.; Weight, 3 lb. 11 oz. 15 dr.

BENARES.

NO. 99, SECOND SERIES.

"2987"



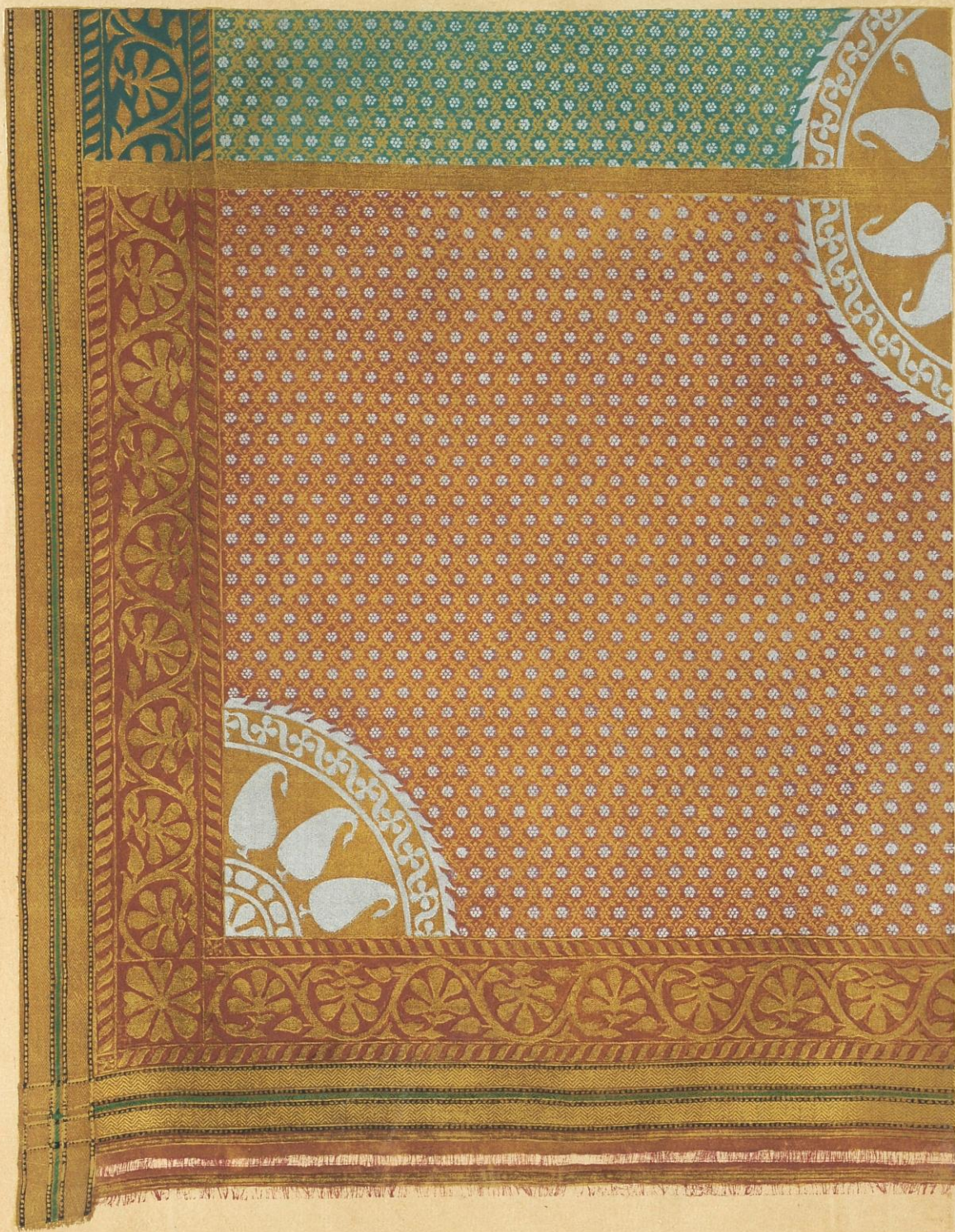
MAN'S GARMENT.

Length, 3 Yds. 16½ Ins.; Width, 1 Yd. 26 Ins.; Weight, 3 lb. 12 dr.

BENARES.

NO. 100, SECOND SERIES.

"3251"



W. CRIGGS, PHOTO-LITH.

INDIA MUSEUM

MAN'S GARMENT.

Length, 2 Yds. 1 In.; Width, 2 Yds. 1½ In.; Weight, 2 lb. 8 oz. 4 dr.

BENARES.

NO. 100A, SECOND SERIES.

"3648"



W. GRIGGS, PHOTO-LITH

INDIA MUSEUM

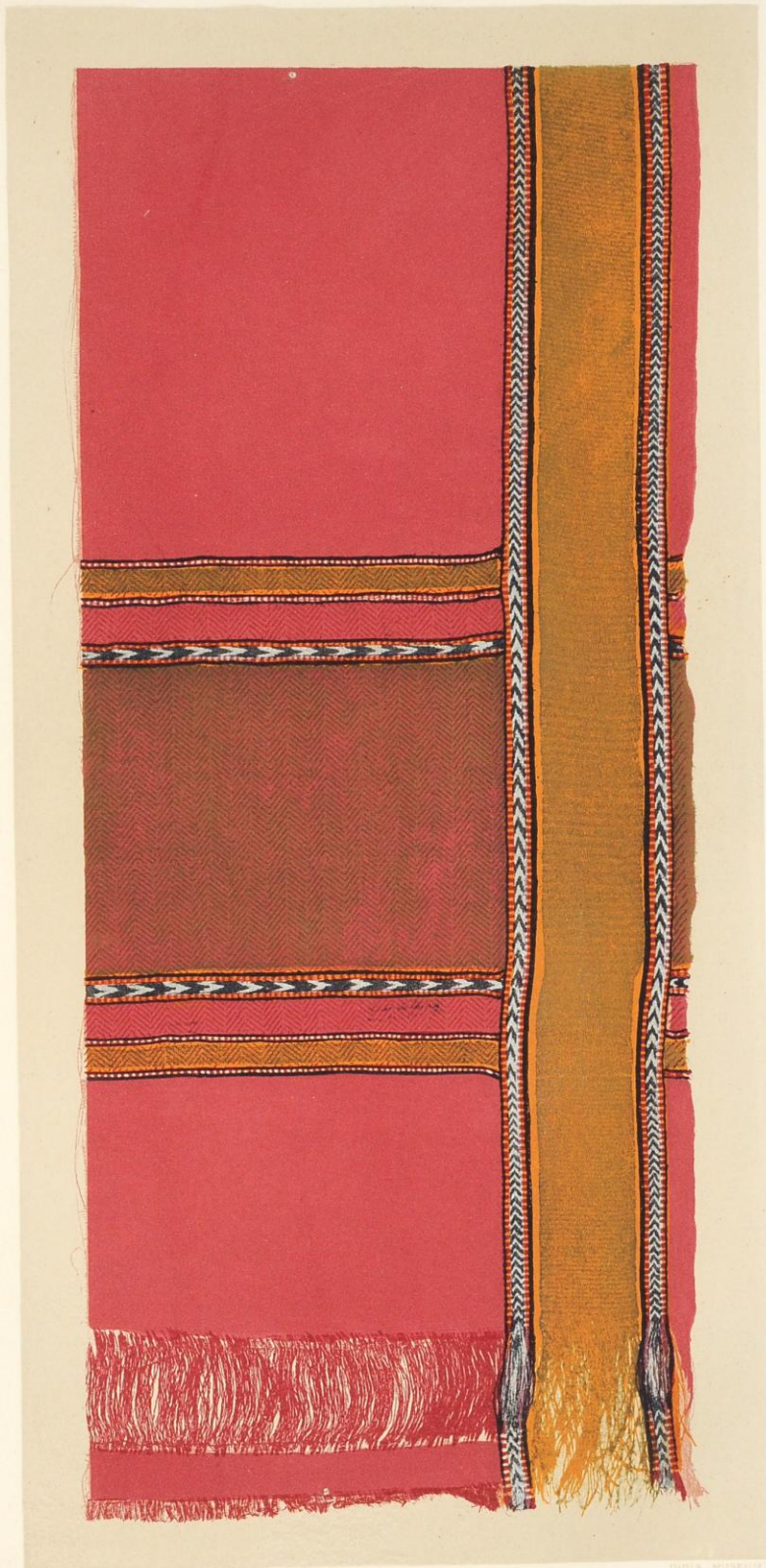
MAN'S GARMENT.

Length, 4 Yds. 33 Ins.; Width, 31 Ins.; Weight, 1 lb. 2 oz. 8 dr.

LOODIANA.

NO. 101, SECOND SERIES.

"2962"



WARRISS, PHOTO LITH.

INDIA MUSEUM.

MAN'S GARMENT.

Length, 3 Yds. $28\frac{1}{2}$ Ins.; Width, $29\frac{1}{2}$ Ins.; Weight, 12 oz. 7 dr.

GOODASPORE.

NO. 103, SECOND SERIES.

"2936"



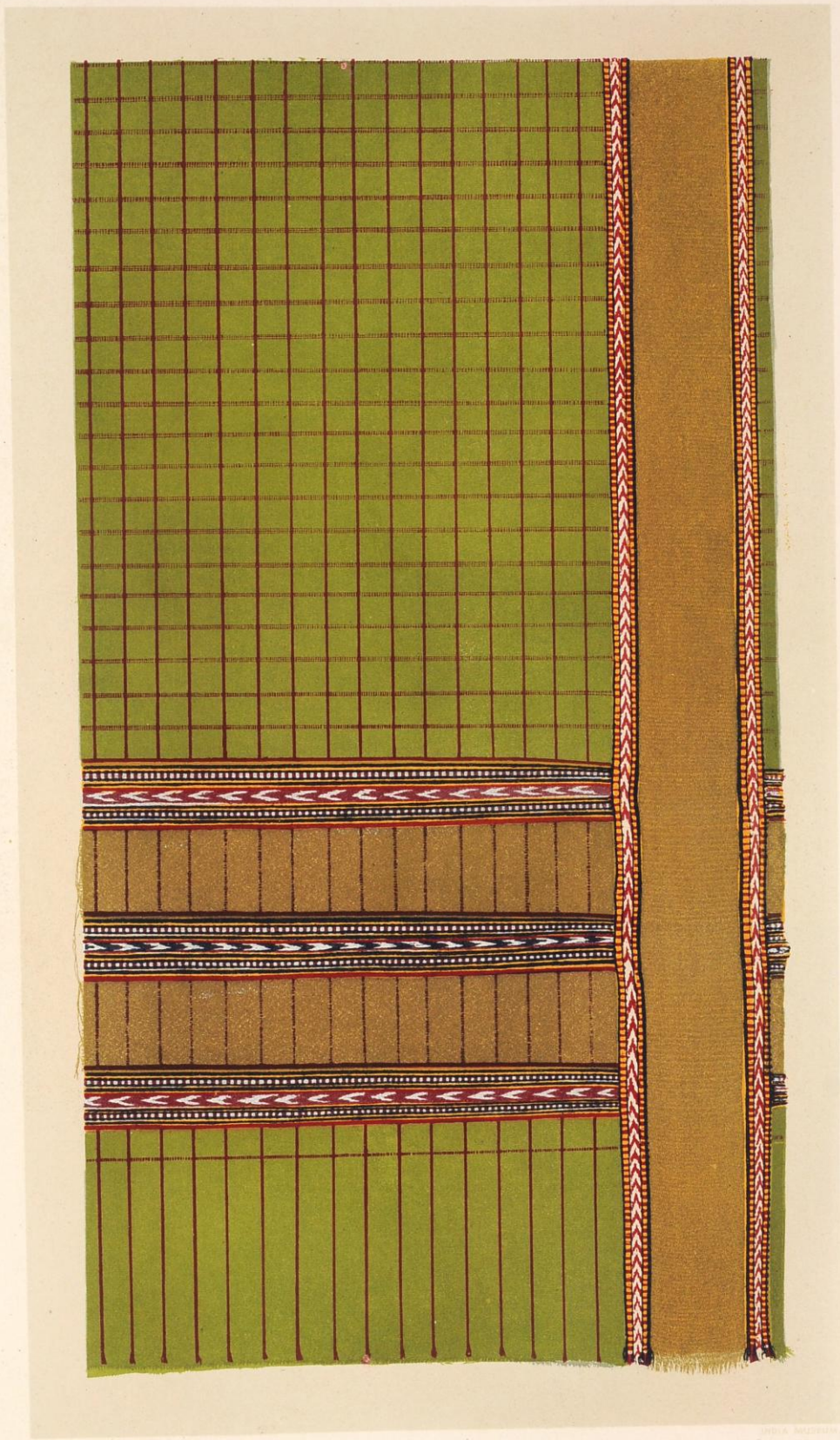
MAN'S GARMENT.

Length, 3 Yds. $20\frac{1}{2}$ Ins.; Width, $27\frac{1}{2}$ Ins.; Weight, 10 oz. 3 dr.

JHELUM.

NO. 104, SECOND SERIES.

"2949"



MAN'S GARMENT.

Length, 3 Yds. 21 Ins.; Width, 27½ Ins.; Weight, 10 oz. 15 dr.

UMRITSUR.

NO. 108, SECOND SERIES.

"7531"



W. CRICCO, PHOTO LITH.

INDIA MUSEUM.

MAN'S GARMENT.

Length, 3 Yds.; Width, $25\frac{1}{2}$ Ins.; Weight, 9 oz. 2 dr.

PUNJAB.

NO. 110, SECOND SERIES.

"5551"



MAN'S GARMENT.

Length, 4 Yds. 5 Ins.; Width, 28½ Ins.; Weight, 1 lb. 3 oz.

PUNJAB.

NO. 111, SECOND SERIES.

"2965"



W. GRIFFITHS, PHOTOGRAPHER.

INDIA MUSEUM.

MAN'S GARMENT.

Length, 3 Yds. 24 Ins.; Width, 1 Yd. 20 Ins.; Weight, 1 lb. 14 oz. 10 dr.

PUNJAB.

NO. 112, SECOND SERIES.

"2964"



W. GRIGGE, PHOTO-LITH

INDIA MUSEUM

MAN'S GARMENT.

Length, 4 Yds. 7 Ins.; Width, 28 Ins.; Weight, 12 oz. 2 dr.

BHAWULPORE.

NO. 113, SECOND SERIES

"2973"



W. GRIGGS, PHOTO-LITH

INDIA MUSEUM

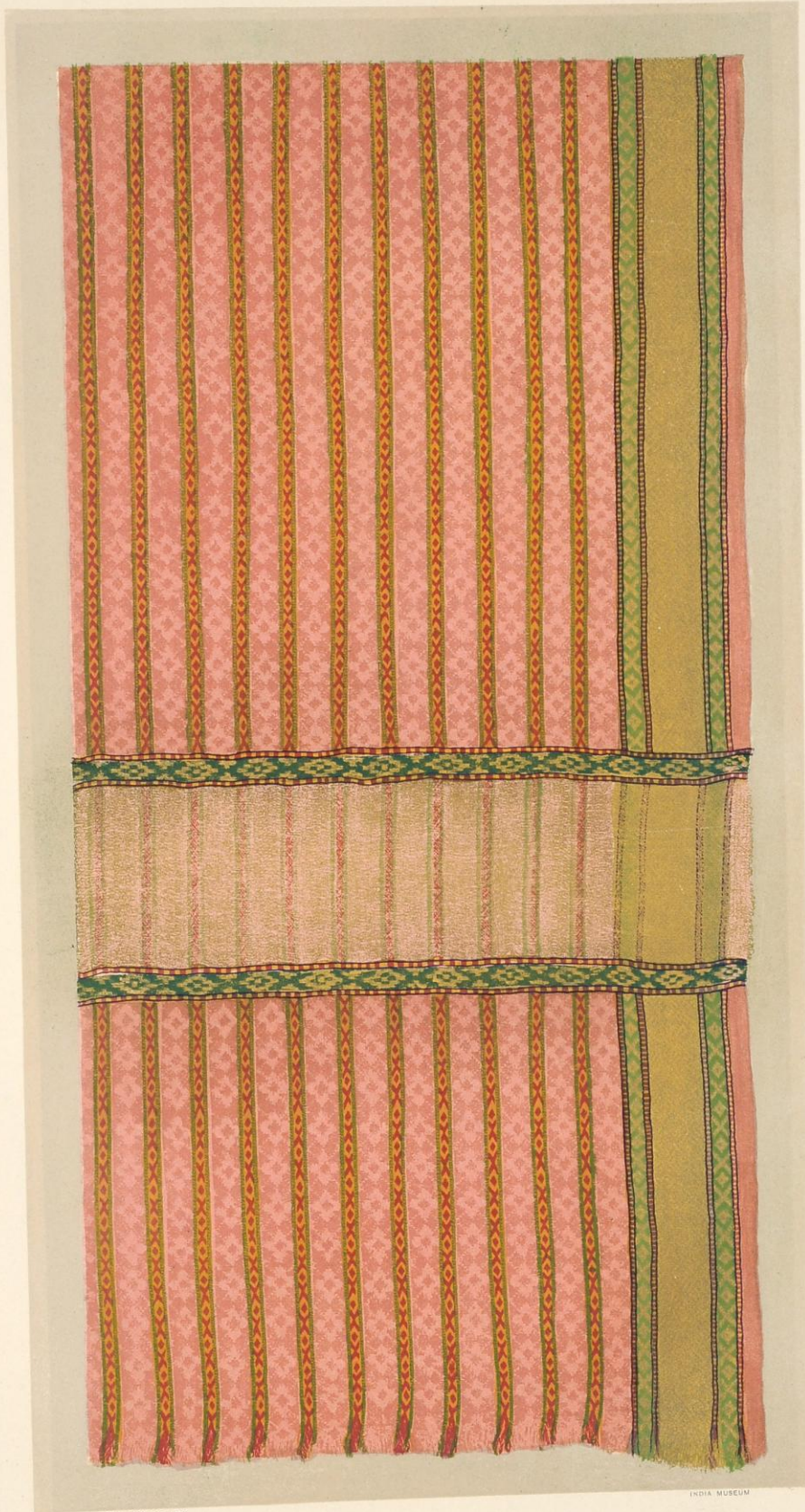
MAN'S GARMENT.

Length, 4 Yds. 10 Ins.; Width, 27 Ins.; Weight, 12 oz. 5 dr.

BHAWULPORE.

NO. 114, SECOND SERIES.

"2978"



W. KRIGGS, PHOTO-LITH

INDIA MUSEUM

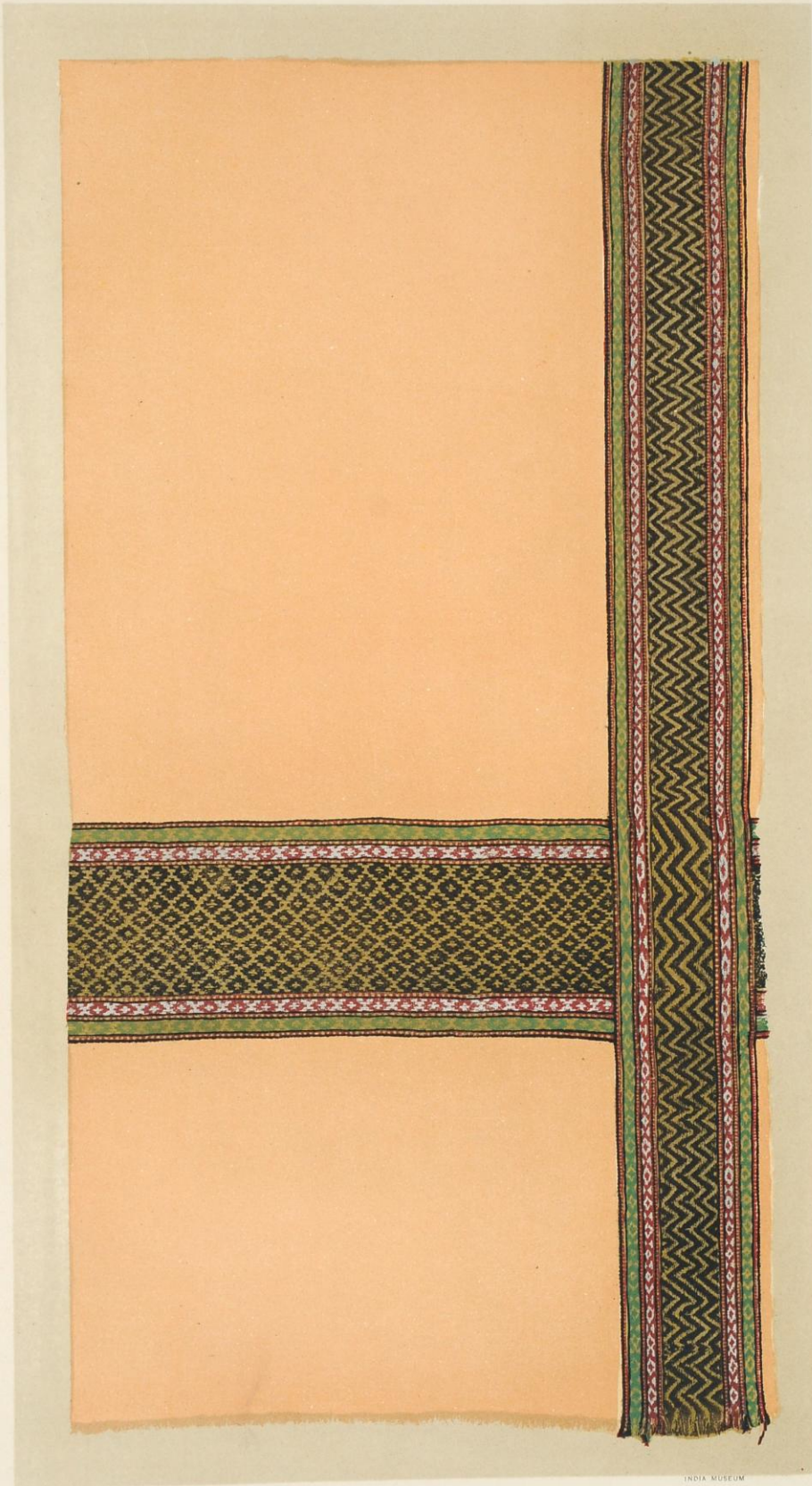
MAN'S GARMENT.

Length, 4 Yds. $8\frac{1}{2}$ Ins.; Width, $27\frac{1}{2}$ Ins.; Weight, 13 oz. 7 dr.

BHAWULPORE.

NO. 115, SECOND SERIES.

"2972"



W. CRIGGS, PHOTO-LITH

INDIA MUSEUM

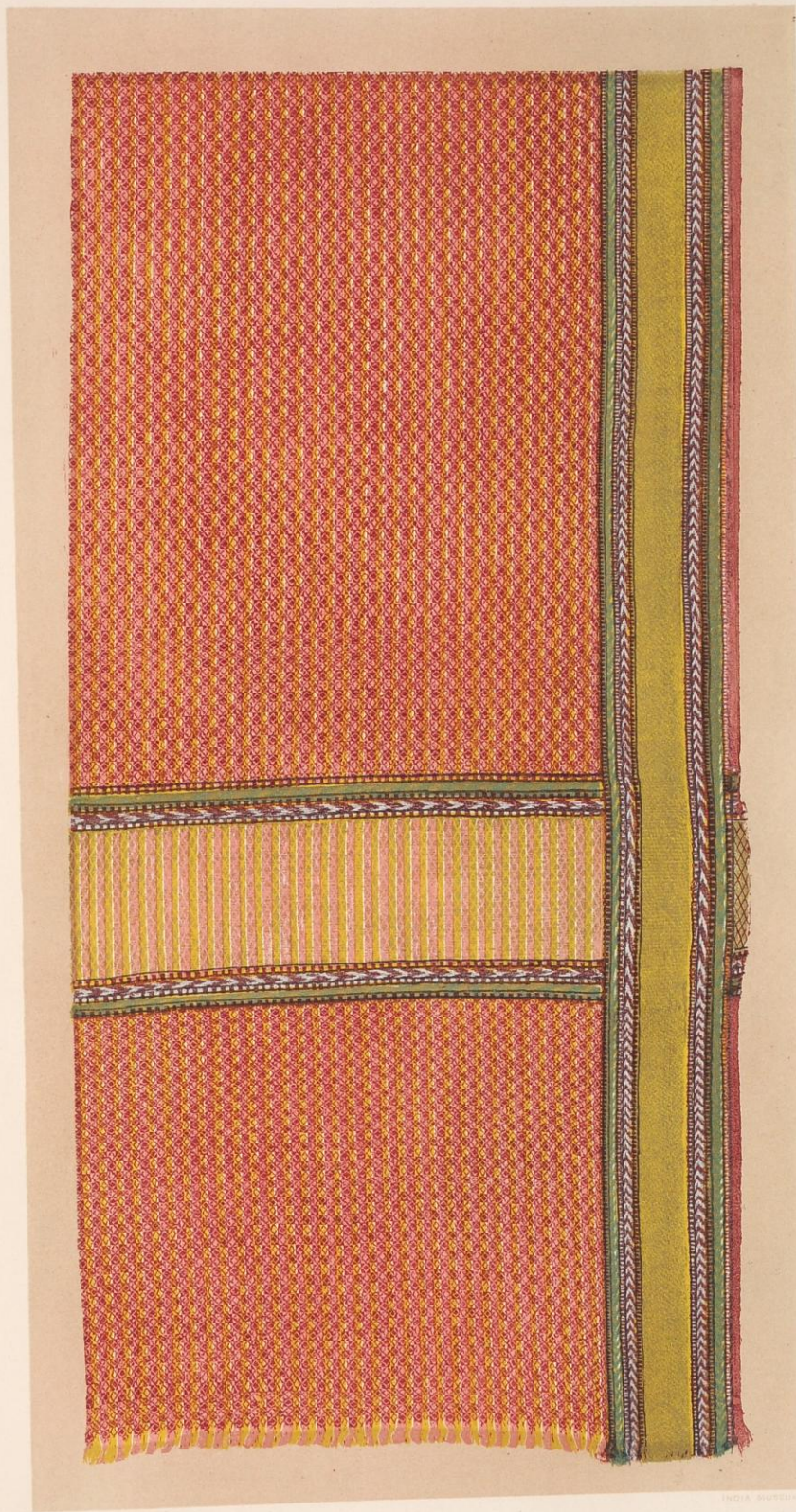
MAN'S GARMENT.

Length, 4 Yds. $5\frac{1}{2}$ Ins.; Width, 27 Ins.; Weight, 9 oz. 2 dr.

BHAWULPORE.

NO. 116, SECOND SERIES.

"2937"



MAN'S GARMENT.

Length, 4 Yds. 8 Ins.; Width, 26½ Ins.; Weight, 11 oz. 15 dr.

BHAWULPORE.

NO. 117, SECOND SERIES.

"2967"



W. GRIGGS, PHOTO-LITH

INDIA MUSEUM

MAN'S GARMENT.

Length, 3 Yds. 15 Ins.; Width, 26½ Ins.; Weight, 10 oz. 12 dr.

BHAWULPORE.

NO. 118, SECOND SERIES.

"2968"



MAN'S GARMENT.

Length, 4 Yds. $11\frac{1}{2}$ Ins.; Width, 28 Ins; Weight, 12 oz. 15 dr.

BHAWULPORE.

NO. 119, SECOND SERIES.

"2079"



W. & A. G. P. PHOTOGRAPHY

INDIA MUSEUM

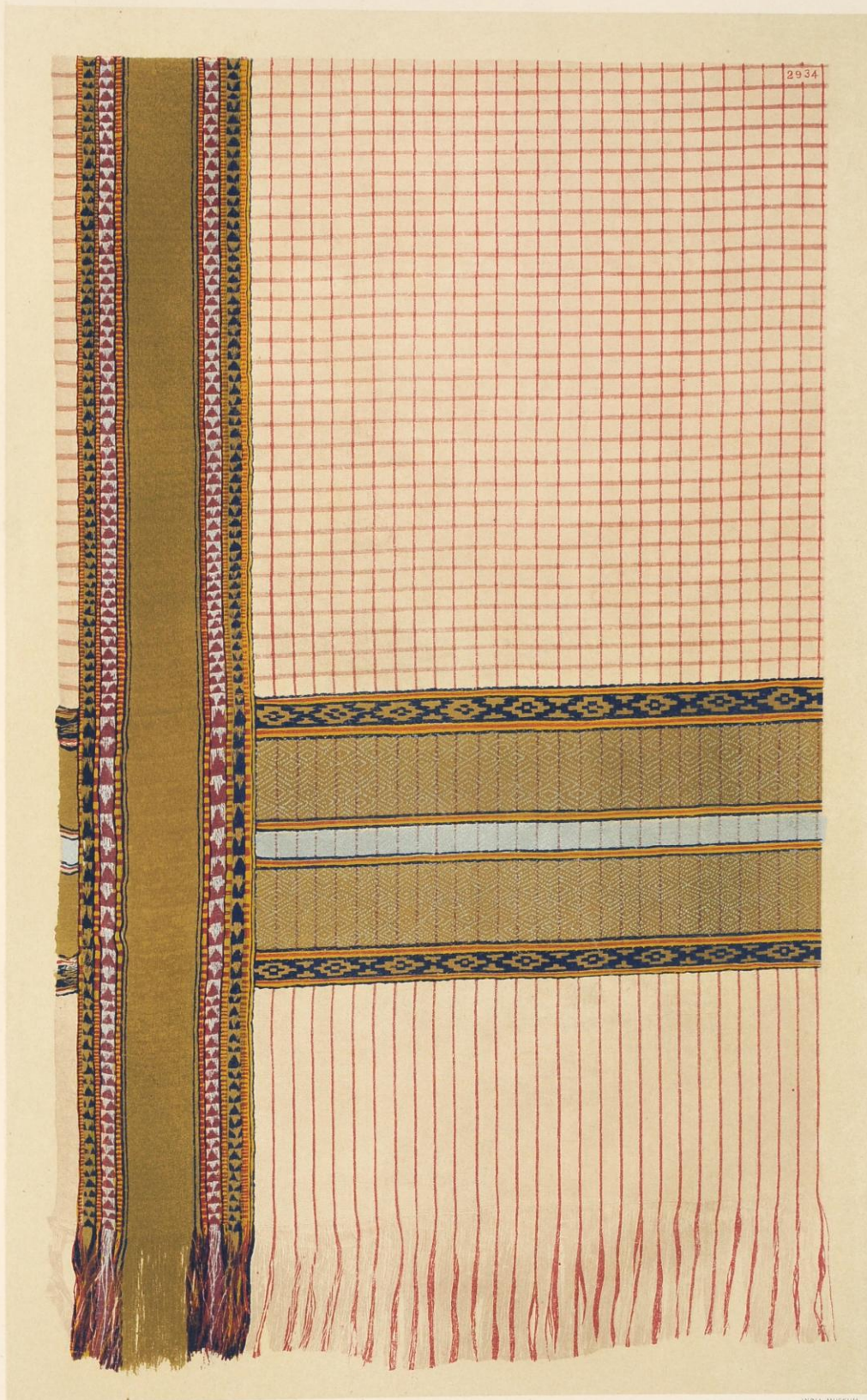
MAN'S GARMENT.

Length, 3 Yds. 22½ Ins.; Width, 31 Ins.; Weight, 13 oz. 14 dr.

LAHORE.

NO. 120, SECOND SERIES.

"2980"



W. CRIGGS, PHOTO-LITH

INDIA MUSEUM

MAN'S GARMENT.

Length, 3 Yds. 31 Ins.; Width, 1 Yd. 20½ Ins.; Weight, 1 lb. 13 oz. 4 dr.

LAHORE.

NO. 121 SECOND SERIES.

"2934"



W. G. B. PHOTO-LITH.

INDIA MUSEUM

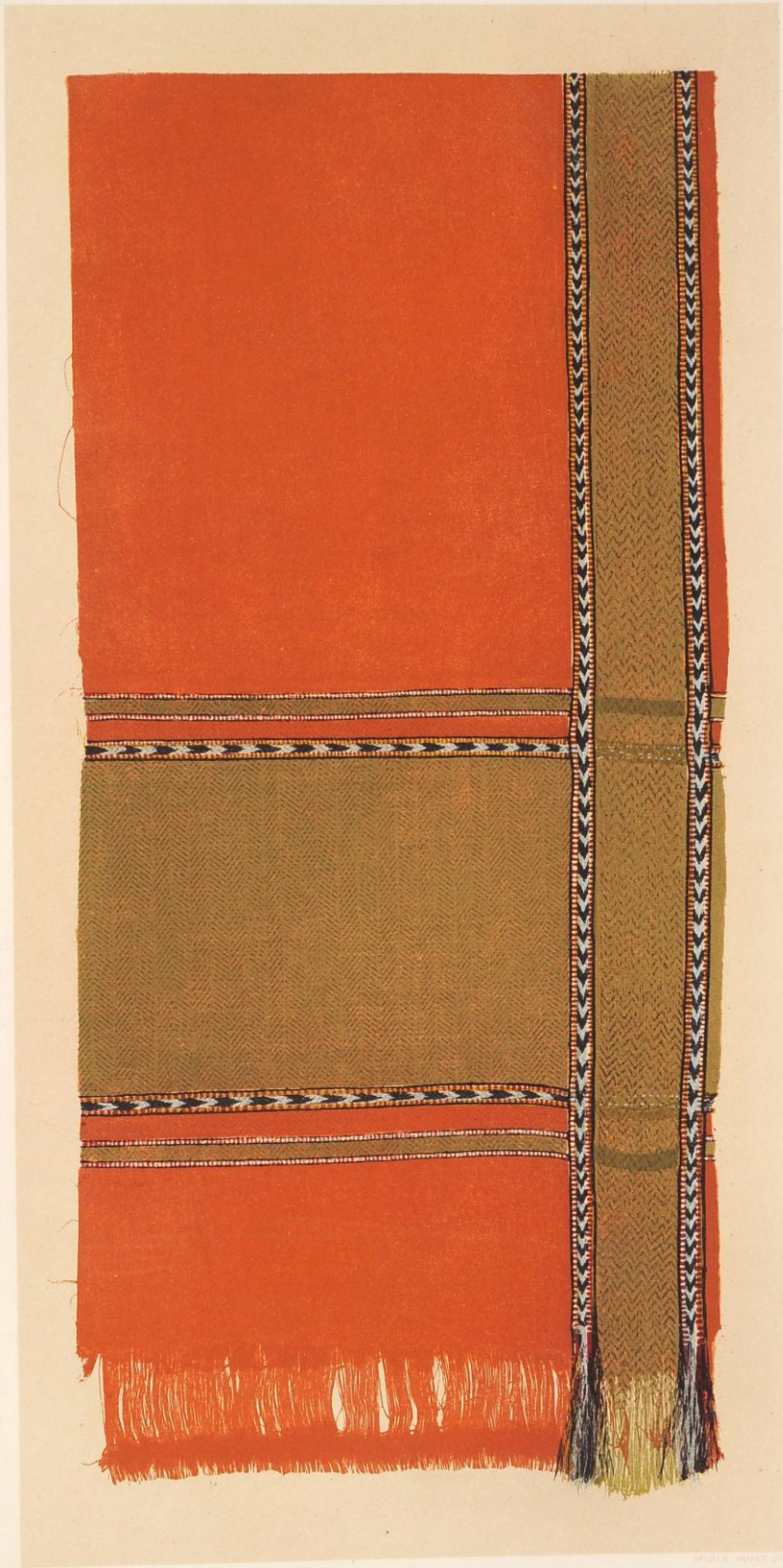
MAN'S GARMENT.

Length, 3 Yds. 30½ Ins.; Width, 31 Ins.; Weight, 1 lb. 2 oz. 8 dr.

MOOLTAN.

NO. 122, SECOND SERIES.

"2944"



MAN'S GARMENT.

Length, 3 Yds. 29 Ins.; Width, 30 Ins.; Weight, 1 lb. 1 oz. 2 dr.

MOOLTAN.

NO. 123, SECOND SERIES.

"2941"



W. GRIGGS, PHOTO-LITH

INDIA MUSEUM

MAN'S GARMENT.

Length, 3 Yds. 28 Ins.; Width, 30½ Ins.; Weight, 1 lb. 1 oz. 4 dr.

MOOLTAN.

NO. 125, SECOND SERIES.

"3702"



W. GRIFFIN PHOTO LITH.

INDIA MUSEUM

MAN'S GARMENT.

Length, 3 Yds. $23\frac{1}{2}$ Ins.; Width, $30\frac{1}{2}$ Ins.; Weight, 1 lb. 1 oz. 9 dr.

MOOLTAN.

NO. 126, SECOND SERIES.

" 2940 "



W. GRIGGS, PHOTO-LITH

INDIA MUSEUM

MAN'S GARMENT.

Length, 2 Yds. 27 Ins.; Width, 1 Yd. 6½ Ins.; Weight, 1 lb. 15 oz. 14 dr.

CACHAR.

NO. 129, SECOND SERIES.

"2576"



W. GRIGGS, PHOTO-LITH

INDIA MUSEUM

MAN'S GARMENT.

Length, 2 Yds. $2\frac{1}{2}$ Ins.; Width, 1 Yd. $13\frac{1}{2}$ Ins.; Weight, 1 lb. 11 oz.

CACHAR.

NO. 130, SECOND SERIES.

"2574"



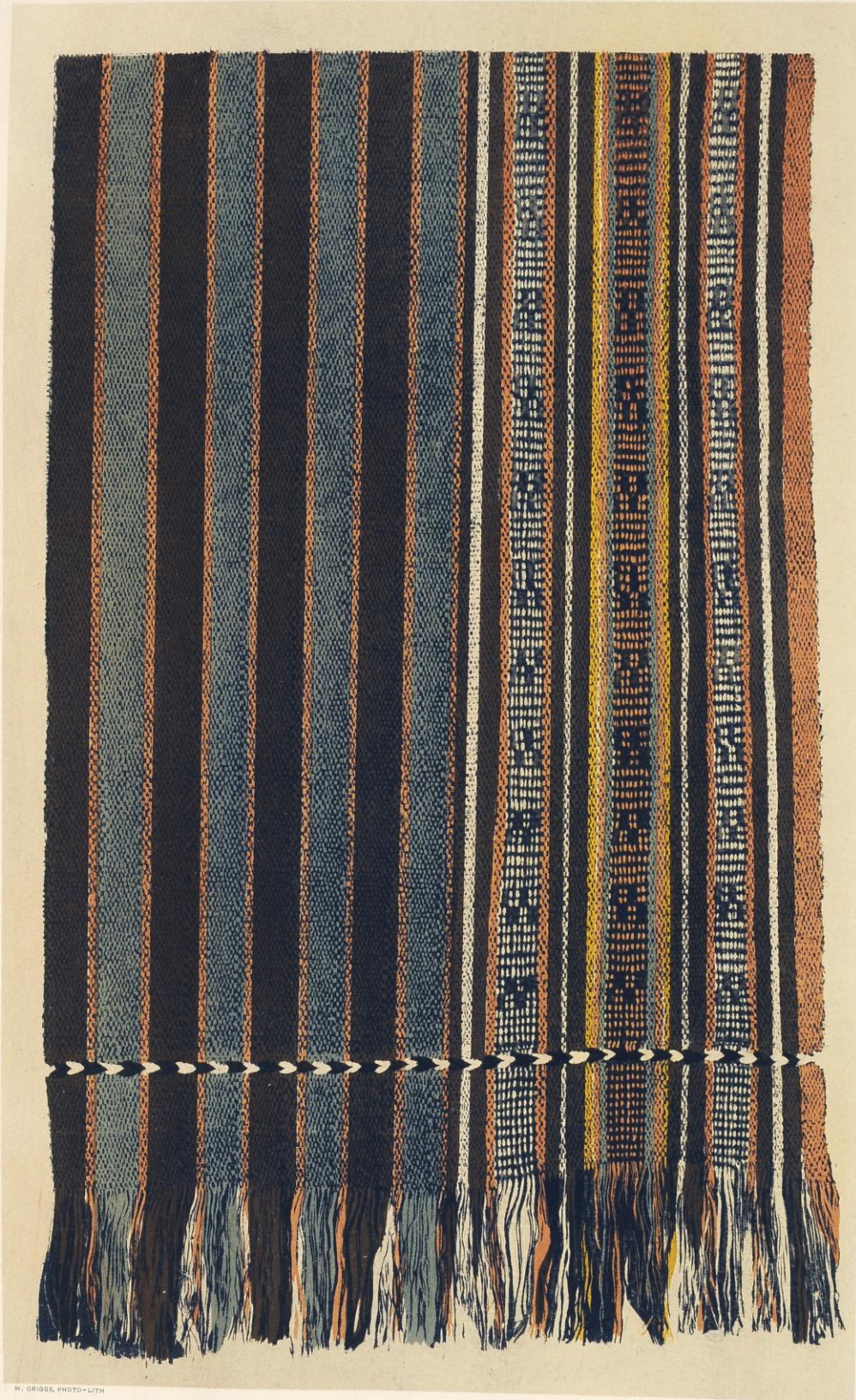
MAN'S GARMENT.

Length, 4 Yds. 5½ Ins.; Width, 16 Ins.; Weight, 15 oz. 8 dr.

ARRACAN.

NO. 131, SECOND SERIES.

"2588"



W. GRIGG, PHOTO-LITH

INDIA MUSEUM

MAN'S GARMENT.

Length, 2 Yds. $32\frac{1}{2}$ Ins.; Width, 1 Yd. 12 Ins.; Weight, 1 lb. 12 oz. 1 dr.

SYLHET.

NO. 132, SECOND SERIES

"2580"



W. CHISCO, PHOTO-GRAPH

INDIA MUSEUM

MAN'S GARMENT.

Length, 2 Yds. 16½ Ins.; Width, 1 Yd. 4 Ins.; Weight, 12 oz.

SIAM.

NO. 133, SECOND SERIES.

"3294"



MAN'S GARMENT.

Length, 2 Yds. $32\frac{1}{2}$ Ins.; Width, 1 Yd.; Weight, 14 oz. 4 dr.

PALEMBANG.

NO. 134, SECOND SERIES.

"3297"



EMBROIDERED CHAIR COVER.

DELHI.

No. 386.

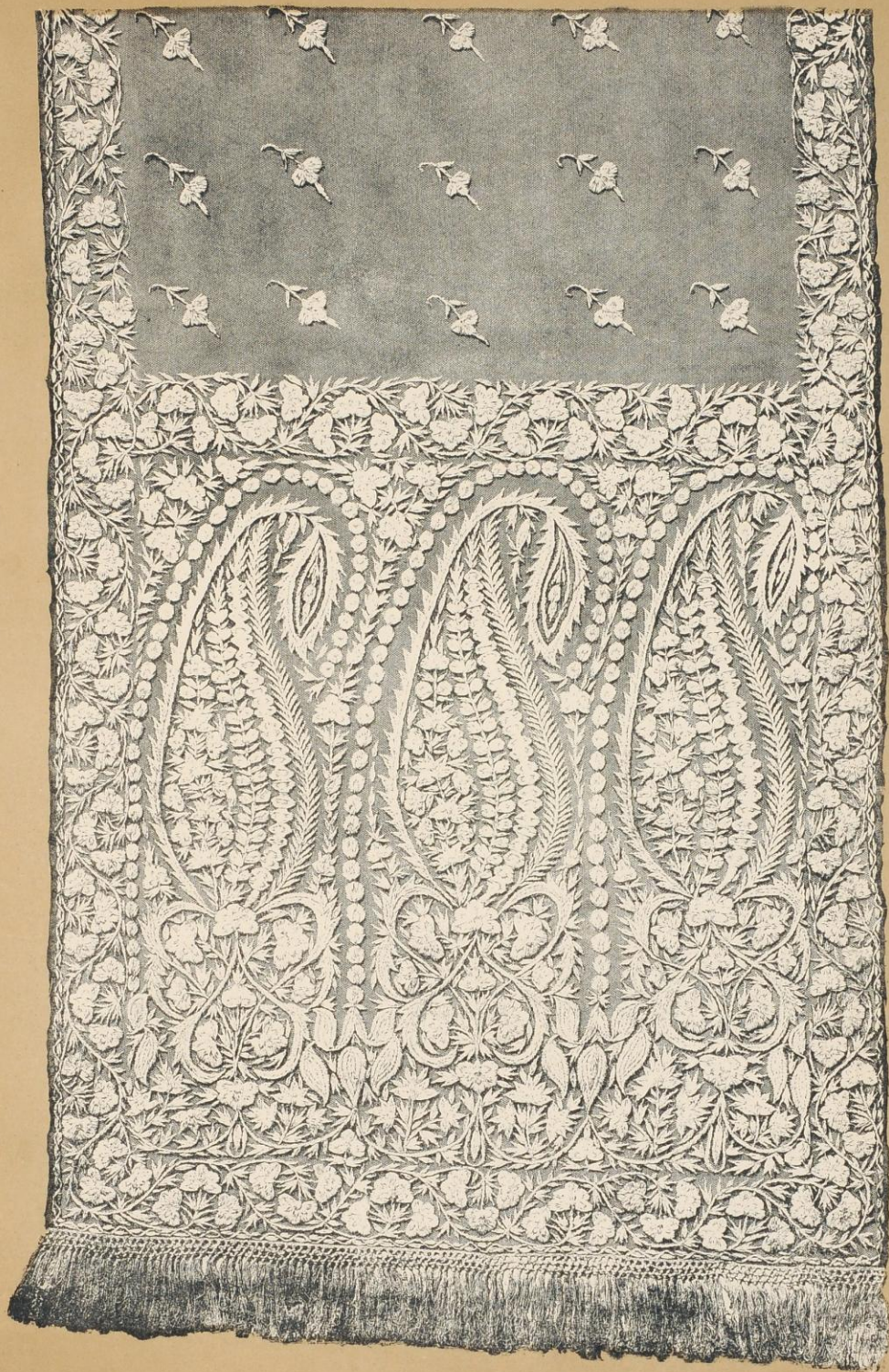


PHOTO-LITH. BY W. GRIGGS

INDIA MUSEUM, LONDON.

EMBROIDERED SCARF.

WHITE SILK ON BLACK NET.

Length 3 Yards.
Width 23 Inches.
Weight $6\frac{3}{4}$ oz.
Price (1855)... Rs. 9.

DELHI.



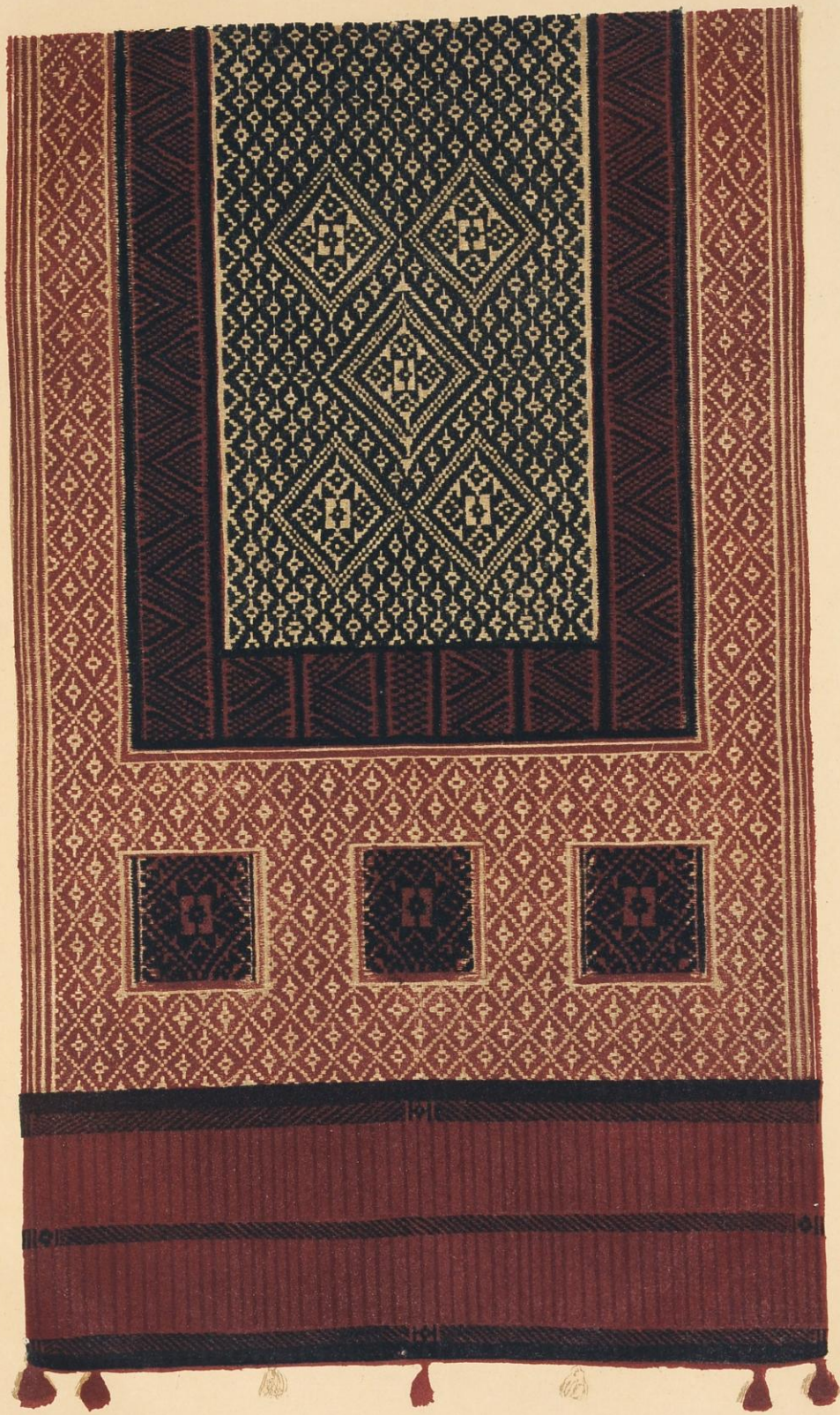
PHOTO-LITH BY W. CRIGGS

INDIA MUSEUM

DELHI EMBROIDERED SHAWL:
WHITE SILK ON BLACK NET.



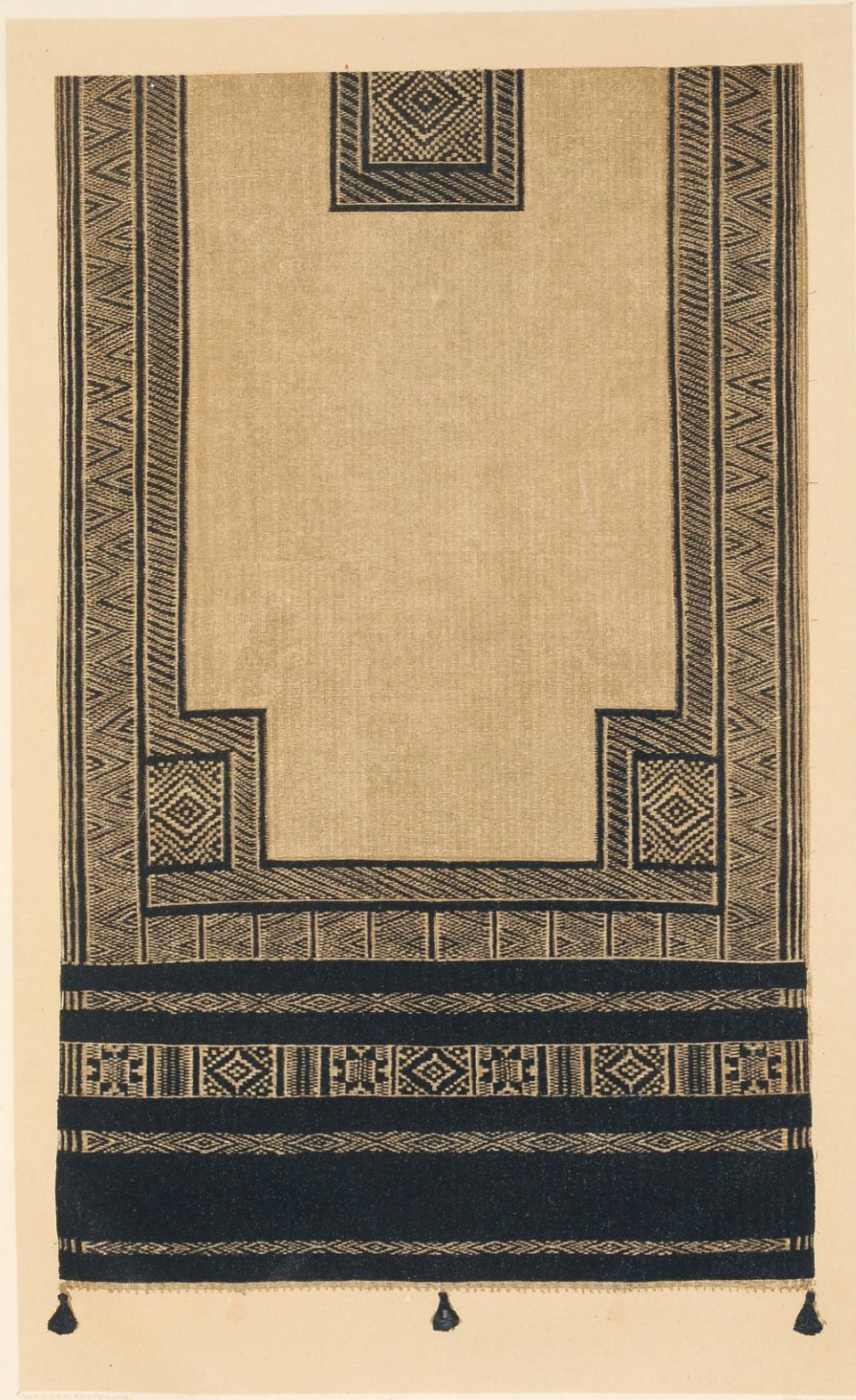
EMBROIDERED CANOPY.
KUTCH.
No. 388.



M A T.
PALGHAT, MADRAS.

NO. 389, SECOND SERIES.

"12721 D"



MAT,
PALGHAT, MADRAS.

NO. 390, SECOND SERIES.

"12721 A"



MAT,
PALGHAT, MADRAS.

NO. 391, SECOND SERIES.

"12721 B"



M A T.
PALGHAT, MADRAS.

NO. 392, SECOND SERIES.

"12721 C"



M A T.
PALGHAT, MADRAS.

NO. 393, SECOND SERIES.

"12721 E"



MAT.
PALGHAT, MADRAS.

NO. 394, SECOND SERIES.

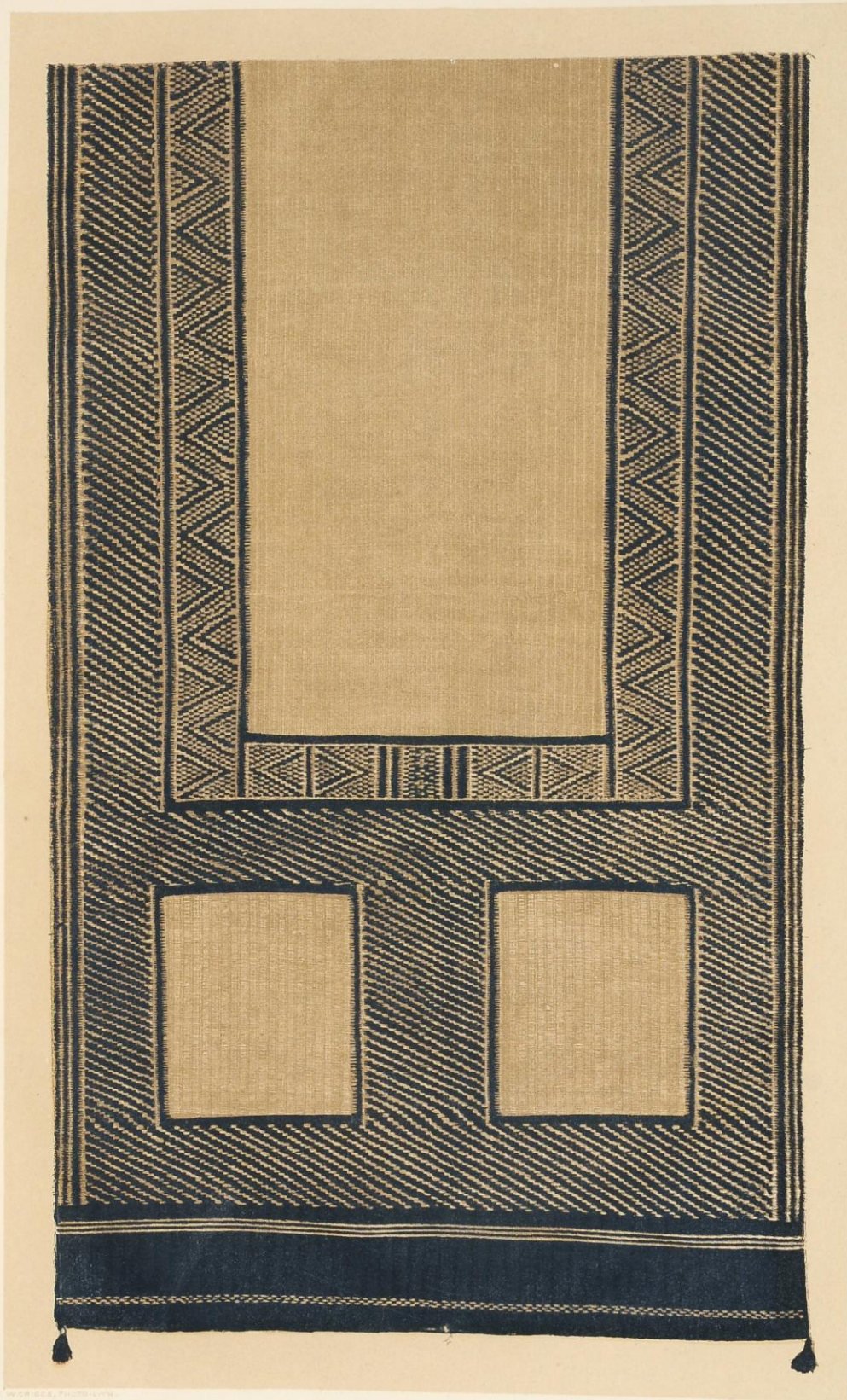
"12721 F"



MAT.
PALGHAT, MADRAS.

NO. 395, SECOND SERIES.

"12721 G"



M A T.
PALGHAT, MADRAS.

NO. 396, SECOND SERIES.

"12721 H"



MAT.
PALGHAT, MADRAS.

NO. 397, SECOND SERIES.

"12721, 1"



MAT.
PALGHAT, MADRAS.

NO. 398, SECOND SERIES.

"12721"



MAT.
MADRAS.

NO. 399, SECOND SERIES.

"12724"



M A T.
JESSORE.

NO. 400, SECOND SERIES.

"12723"